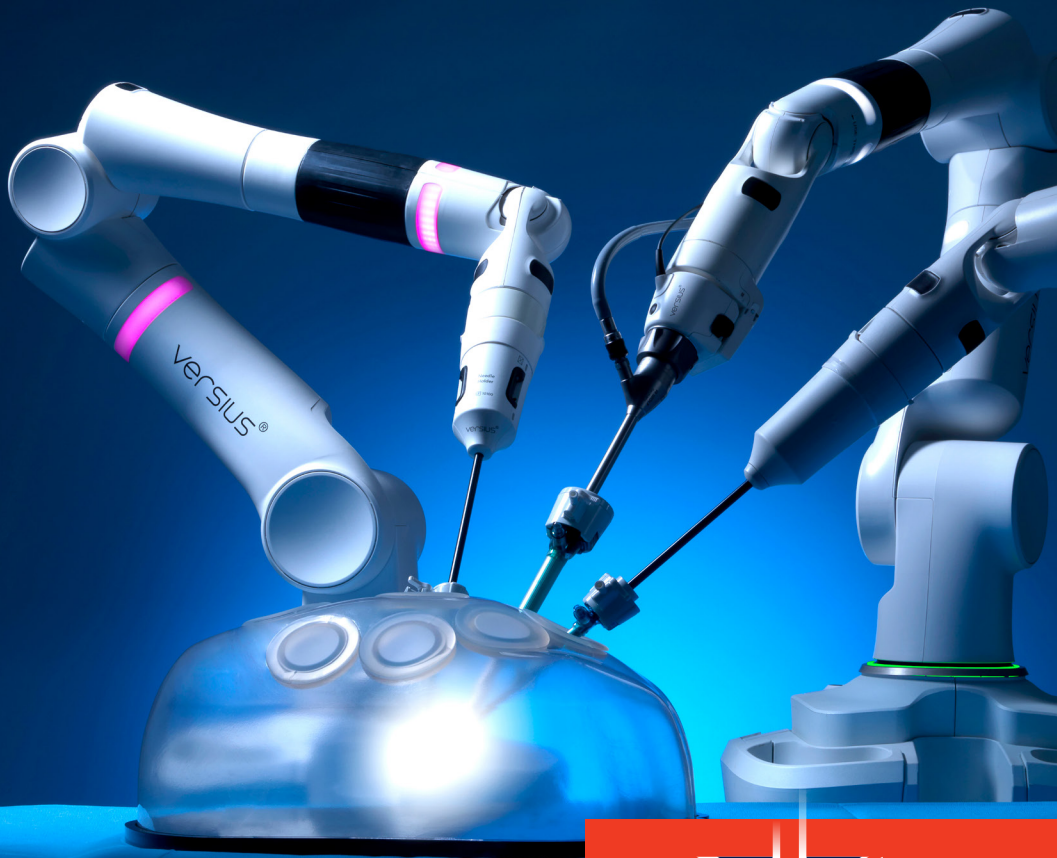


The NHS Export Collaborative

Connect and Collaborate




GREAT 
BRITAIN & NORTHERN IRELAND



The NHS Export Collaborative

The **NHS Export Collaborative (NEC)** is a partnership initiative between:

- NHS England (NHSE)
- Healthcare UK (HCUK) / Department for Business and Trade (DBT)
- Department of Health and Social Care (DHSC)

As part of Healthcare UK, we work with other sector teams in the Department for Business and Trade to convert the NHS pipeline of commercial opportunities into export wins.



About Healthcare UK

Healthcare UK is a joint initiative between the Department for Business and Trade, the Department of Health and Social Care and NHS England. Healthcare UK's mission is to fully mobilise the best of UK Healthcare expertise to improve the economic and social well-being of the UK through global trade.

Healthcare UK promotes the British healthcare sector internationally and drives export opportunities to win more business overseas. We work with the NHS to strengthen its capacity to operate and succeed internationally.

Healthcare UK:

- Works in collaboration with NHS Trusts, organisations and agencies
- Helps NHS organisations and other UK healthcare providers raise their international profile and win overseas contracts
- Encourages UK healthcare providers to work together to bid for major international projects
- Helps overseas organisations find a UK healthcare provider that can supply the services and expertise they need
- Delivers international trade missions and welcomes incoming delegations to the UK



Education and Training



Clinical Services



Digital Health



Health Systems Development



Infrastructure Services

Healthcare UK Activities and Programmes

The Export Catalyst

- Supporting healthcare organisations to work overseas
- Strategy development
- Product and service development
- Market prioritisation

Healthcare Opportunities

- Key account management across Clinical Services, Digital Health, Health Systems Development, Training and Education, and Health Infrastructure Services sectors
- Identification and dissemination of business leads and commercial prospects for UK healthcare organisations
- Overseas events and missions

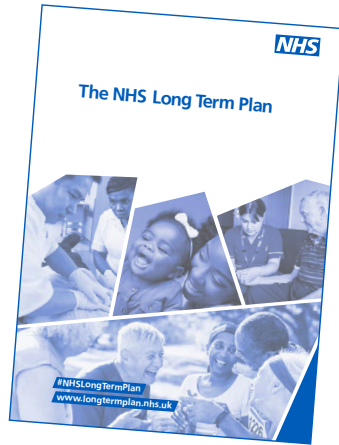
The NHS Export Collaborative

- Consortia development
- Collaborative working and peer2peer learning – across public and private sector
- Joint GTM activities – proactively promoting a comprehensive NHS offer in target markets

Our Story

2019

Part of the NHS Long Term Plan



2021

A unique partnership

NHS Export Collaborative



2022-24

A fresh approach to building export capacity



Our Focus

The NHS Export Collaborative:

- Enables consortia development for international healthcare exports
- Fosters collaborative working across both the public and private sectors
- Facilitates peer-to-peer and partnership learning
- Delivers comprehensive NHS healthcare expertise into target international markets

The NHS Export Collaborative builds upon Healthcare UK's existing programme of support to the NHS. We focus on bringing together NHS organisations so that they can better meet international demand for better healthcare solutions.

We believe that by working together, the NHS can export cutting-edge treatments at scale, bringing innovation and best practice to a global healthcare audience.



The NHS Export Collaborative

Consortia Development Case Study: King's International Consortium

Consortium Overview

Name: King's International Consortium (KIC)

Consortia Model: Formal with Lead Contractor

Status: Formed/operational

Date Officially Launched: January 2023

Number of Years Operating: 1

Current H/C Competencies: Various including – Acute Liver disease, Oncology, Neuroscience, Haematology, Trauma, Foetal Medicine, Stroke. Active in Training and Education and Recruitment, Mental Health.



The six member organisations celebrate the launch of the KIC consortium in January 2023.

KIC Partners:



Connect and Collaborate Directory

The NHS Export Collaborative (NEC) has an established **Connect and Collaborate Directory**.

The directory brings together 30 NHS organisations with a range of expertise and specialisms. As a collective, they can meet the health transformation needs of international clients and partners across multiple sectors, including primary care and digital health.

By working together, we can co-create better health for all.

To find out more about how the Connect and Collaborate Directory can work with you to build bespoke commercial solutions to global healthcare challenges please email: healthcare.uk@businessandtrade.gov.uk

Connect and Collaborate Directory

Your first step in building healthcare solutions

Alder Hey Children's NHS Foundation Trust



 www.alderhey.nhs.uk

Alder Hey Children's NHS Foundation Trust is one of Europe's biggest and busiest children's hospitals, treating everything from common illnesses to highly complex and specialist conditions.

Cambridge University Hospitals NHS Foundation Trust



 www.cuh.nhs.uk

Cambridge University Hospitals NHS Foundation Trust provides emergency, surgical and medical care and is also a centre of excellence for specialist services such as organ transplantation, neurosciences, paediatrics, and genetics. Their women's hospital, The Rosie, is a centre of excellence for maternity care.

University of Cambridge Medical Education Group



 www.cumeg.cam.ac.uk

Cambridge University Medical Education Group provide bespoke medical education services including:

- Advice in the development of new medical schools
- Advice on changing/enriching existing medical schools
- Advice and bespoke training on assessment – online and in-person
- Curriculum design and support
- Faculty and professional development
- Quality assurance frameworks
- Bespoke courses – including ethics, public health and staff development.

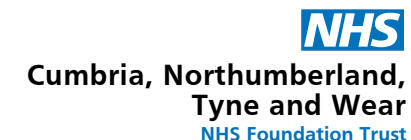
Chelsea & Westminster Hospital NHS Foundation Trust



 www.chelwest.nhs.uk

Chelsea and Westminster Hospital NHS Foundation Trust is one of the top ranked and top performing hospital trusts in the UK for accident and emergency (A&E), referral to treatment (RTT) and cancer. Specialist care includes the world-renowned burns service, Chelsea Children's Hospital, and specialist HIV and sexual health care services. With a portfolio of innovation projects, the Trust aims to become a national leader for innovation within the NHS.

Cumbria, Northumberland, Tyne & Wear NHS Foundation Trust



 www.cntw.nhs.uk

Cumbria, Northumberland, Tyne and Wear NHS Foundation Trust provides a range of mental health, learning disability and neurological care services.

Frimley Health NHS Foundation Trust



 www.fhft.nhs.uk

Frimley Health NHS Foundation Trust delivers excellent general hospital services and provides specialist heart attack, vascular, stroke, spinal, cystic fibrosis, and plastic surgery services.

Great Ormond Street Hospital for Children NHS Foundation Trust



www.gosh.nhs.uk

Great Ormond Street Hospital (GOSH) is an international centre of excellence in child healthcare, hosting the UK's only paediatric National Institute for Health Research (NIHR) Biomedical Research Centre (BRC).

Most of the children GOSH care for are referred from other hospitals throughout the UK and overseas. There are over 60 different clinical specialties; the UK's widest range of specialist health services for children on one site. GOSH also offers international education opportunities for overseas staff.

Guy's and St Thomas' NHS Foundation Trust



www.guysandstthomas.nhs.uk

Guy's and St Thomas' provide a full range of lifelong, general and specialist care, as well as clinical research, innovation, education and training.

As a leading centre of clinical research with a long history of innovation and medical firsts, we provide the latest and most advanced treatments.

Our world-famous teaching hospitals train the doctors, nurses and healthcare professionals of the future. GKT School of Medical Education is our medical school, run jointly with King's College London and King's College Hospital.

Health Care First



healthcarefirst.co.uk

As a Personal Medical Services (PMS) practice, Health Care First (HCF) provide services for the diagnosis and prevention of disease. They help patients to manage their health and prevent illness. GPs assess, diagnose, treat, and manage illness, carry out screening for diseases and promote general health and wellbeing. HCF's GPs act as a patient's advocate, supporting and representing a patient's best interests to ensure they receive the best and most appropriate health and/or social care.

Imperial College Healthcare NHS Foundation Trust



www.imperial.nhs.uk

Imperial College Healthcare NHS Trust provides acute and specialist healthcare for over one million people every year. Their five hospitals in central and west London have a long track record in research and education, influencing care and treatment nationally and worldwide. We are developing a growing range of integrated and digital care services and offer private healthcare in dedicated facilities on all our sites.

James Paget NHS Foundation Trust



 www.jpaget.nhs.uk

James Paget NHS Foundation Trust provides a full range of general acute services plus a number of specialised services; including a hyperbaric chamber for ventilating and monitoring critically ill patients whilst they are receiving hyperbaric oxygen therapy. They work with local primary care, community services and other acute trusts, and are fully involved in local health and care partnership.

King's College Hospital NHS Foundation Trust




 www.kch.nhs.uk

King's College Hospital NHS Foundation Trust is one of London's largest hospitals. They provide nationally and internationally recognised treatment and care in liver disease and transplantation, neurosciences, haemato-oncology, and fetal medicine.

Liverpool Heart and Chest Hospital NHS Foundation Trust



 www.lhch.nhs.uk/

Liverpool Heart and Chest Hospital NHS Foundation Trust provide specialist services in cardiothoracic surgery, cardiology, respiratory medicine including adult cystic fibrosis and diagnostic imaging, both in the hospital and out in the community.

Moorfields Eye Hospital NHS



 www.moorfields.nhs.uk

Moorfields Eye Hospital NHS Foundation Trust is the leading provider of eye health services in the UK and a world-class centre of excellence for ophthalmic research and education. With partners at the UCL Institute of Ophthalmology, they are a national and international centre for research into eye conditions and treatments, leading one of the strongest and most extensive ophthalmic research programmes in the world. They are a major force in teaching the eye specialists of the future, with experts providing teaching and training for a wide range of eye health professionals.

National Institute for Health and Care Excellence (NICE)

NICE National Institute for Health and Care Excellence

 <https://www.nice.org.uk>

NICE balances the best care with value for money across the NHS and social care. They provide rigorous, independent assessment of complex evidence to produce guidance and advice for health and social care practitioners.

NICE have a dedicated team of experts that help health organisations, ministries and government agencies improve health and social care outcomes in their countries. They facilitate global collaboration, knowledge exchange and health systems strengthening by supporting the development of evidence-based guidance, standards and indicators for use within local settings.

The Newcastle Upon Tyne Hospitals NHS Foundation Trust


The Newcastle upon Tyne Hospitals
NHS Foundation Trust

 www.newcastle-hospitals.nhs.uk

One of the largest NHS teaching trusts in the UK, providing research-led acute, specialist and local services to patients in Newcastle, the wider north east, the UK and internationally.

NHS England (NHSE)


England

 www.england.nhs.uk/

NHSE supports the delivery of excellent healthcare and health improvement to the patients and public of England. One of the ways in which it does this is by ensuring that the workforce of today and tomorrow has the right numbers, skills, values, and behaviours, at the right time and in the right place.

Northern Care Alliance NHS Foundation Trust


Northern Care Alliance
NHS Foundation Trust

 www.northerncaalliance.nhs.uk

Northern Care Alliance NHS Foundation Trust (NCA) brings together staff and services from Salford Royal NHS Foundation Trust and The Pennine Acute Hospitals NHS Trust. NCA delivers health and social care, as well as more specialist services to patients.

Royal College of General Practitioners



www.rcgp.org.uk

The Royal College of General Practitioners (RCGP) is the professional body for general (medical practitioners (GPPs)/Family Physicians/Primary Care Physicians) in the United Kingdom. It represents and supports GPs on key issues including licensing, education, training, research and clinical standards. It is the largest of the medical Royal Colleges, with over 54,000 members. It sets the highest standards and ensures GPs have the best possible training. It develops general practice as the foundation of effective and sustainable primary care worldwide and is seen as an international leader.

Internationally the RCGP has been active for some 63 years with projects in some 38 countries and members in 100. RCGP always works in partnership with lead international organisations such as WHO and WONCA, Ministries of Health, Universities, Hospitals, Medical Schools and healthcare organisations.

Royal College of Obstetricians and Gynaecologists



www.rcog.org.uk

The Royal College of Obstetricians and Gynaecologists (RCOG) works to improve women's healthcare across the world. They are committed to developing the accessibility and quality of education, training and assessments for doctors wishing to specialise in O&G.

Royal Papworth Hospital NHS Foundation Trust



royalpapworth.nhs.uk

Royal Papworth Hospital NHS Foundation Trust is the UK's leading heart and lung hospital and has established an international reputation for excellence in research and innovation. Royal Papworth Hospital is a member of Cambridge University Health Partners (CUHP), a partnership between one of the world's leading universities and three NHS Foundation Trusts.

South Central Ambulance Service



www.scas.nhs.uk

South Central Ambulance Service NHS Foundation Trust provides a range of emergency, urgent care, and non-emergency healthcare services, along with logistics services.

South London and Maudsley (SLAM) NHS Foundation Trust



 slam.nhs.uk

SLAM provide the widest range of NHS mental health services in the UK. They serve a local population of 1.3 million people in south London, as well as specialist services for children and adults across the UK and beyond.

The Christie NHS Foundation Trust



 www.christie.nhs.uk

The Christie is the largest single site cancer centre in Europe and the first UK centre to be accredited as a comprehensive cancer centre. The Christie has an international reputation and history of advancing cancer treatment, sharing knowledge and research across global networks.

The Royal College of Paediatrics and Child Health



 www.rcpch.ac.uk

The Royal College of Paediatrics and Child Health is the membership body for paediatricians in the UK and around the world. Founded in 1996 and now with about 22,000 members in the UK and internationally, they play a major role in postgraduate medical education, professional standards, research and policy.

The Royal College of Psychiatrists



 www.rcpsych.ac.uk/

The Royal College of Psychiatrists is the professional medical body responsible for supporting psychiatrists throughout their careers from training through to retirement, and in setting and raising standards of psychiatry in the United Kingdom. They work to secure the best outcomes for people with mental illness, learning difficulties and developmental disorders by promoting excellent mental health services, training outstanding psychiatrists, promoting quality and research, setting standards and being the voice of psychiatry.

The Royal College of Radiologists



 www.rcr.ac.uk

The Royal College of Radiologists is the leading professional membership body for clinical radiologists and clinical oncologists, supporting doctors throughout their career so that they can make a real difference. With world-class education and training, their resources allow members to propel their career and expertise to the next stage.

UCL Partners



 uclpartners.com

UCL Partners are a health innovation partnership. They solve the biggest health challenges through research and innovation, speeding up the delivery of solutions that improve health and care.

UK Health Security Agency (UKHSA)



 www.gov.uk/government/organisations/uk-health-security-agency

The UK Health Security Agency (UKHSA) is responsible for protecting every member of every community from the impact of infectious diseases, chemical, biological, radiological and nuclear incidents and other health threats. They provide intellectual, scientific and operational leadership at national and local level, as well as on the global stage, to make the nation's health secure.

UKHSA is an executive agency, sponsored by the UK's Department of Health and Social Care.



GREAT

BRITAIN & NORTHERN IRELAND

Department for Business and Trade

We are the UK's department for economic growth. We support businesses to invest, grow and export, creating jobs and opportunities across the country.

We are responsible for:

- Redrawing our rules to ensure businesses thrive, markets are competitive and consumers are protected.
- Securing investment from UK and international businesses.
- Advising, supporting, and promoting British businesses to grow and export.
- Opening up new markets for businesses by removing barriers and striking trade deals.
- Promoting free trade, economic security and resilient supply chains.

Legal Disclaimer

Whereas every effort has been made to ensure that the information in this document is accurate, the Department for Business and Trade and the Contributors do not accept liability for any errors, omissions or misleading statements, and no warranty is given or responsibility accepted as to the standing of any individual, firm, company or other organisation mentioned.

© Crown copyright 2023

This publication is licensed under the terms of the Open Government Licence v3.0 except where otherwise stated. To view this licence, visit nationalarchives.gov.uk/doc/open-government-licence/version/3

Where we have identified any third party copyright information you will need to obtain permission from the copyright holders concerned.

**Published by
Department for Business and Trade**

January 2024



UK Government