

MY2050 IN BELGIUM

WORKSHOP CLIMATE EDUCATION,
AWARENESS & BEHAVIOUR

10/02/2020

ELISABETH ELLEGAARD

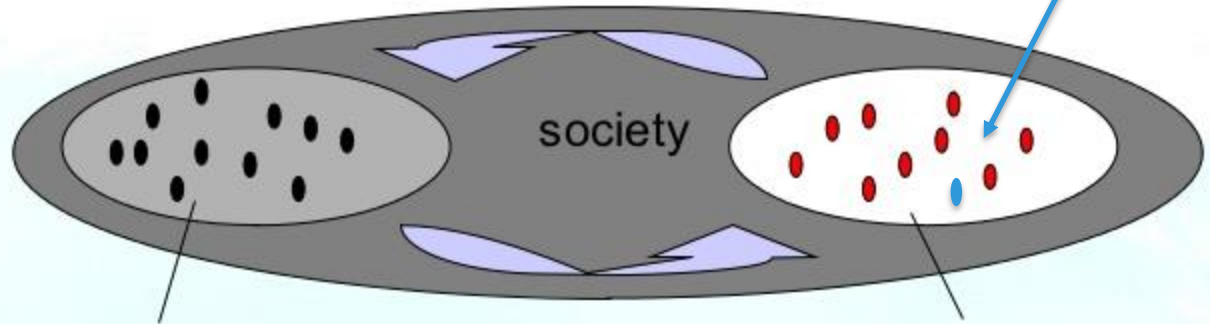
Climate Change Service
Federal Public Service Health,
Food chain safety and Environment



TOWARDS A
LOW CARBON SOCIETY

Transition arenas

YOUTH



Regular policy arena

- Short term
- Peloton
- Incremental change
- Problem- and goal oriented

Transition arena

- Long term
- Frontrunners
- System-innovation
- Problem- and goal searching



Dutch Research Institute For Transitions



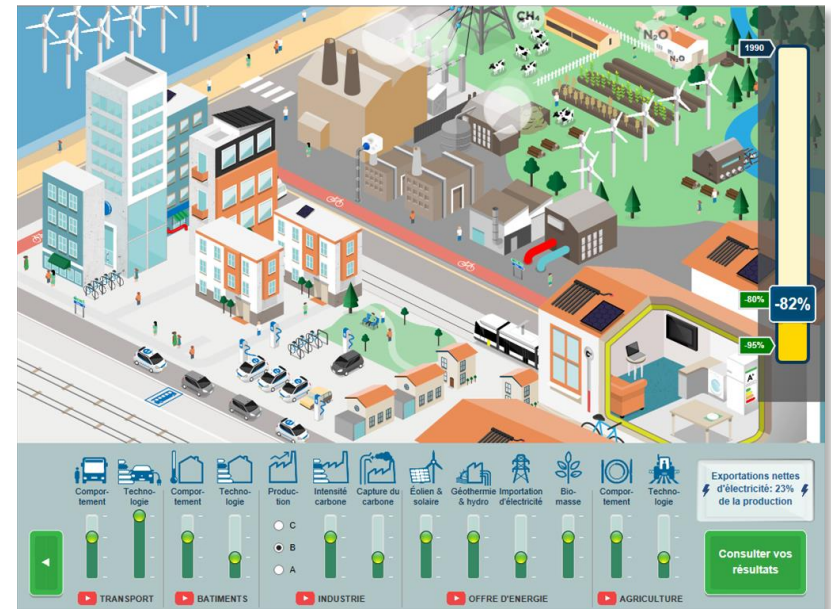
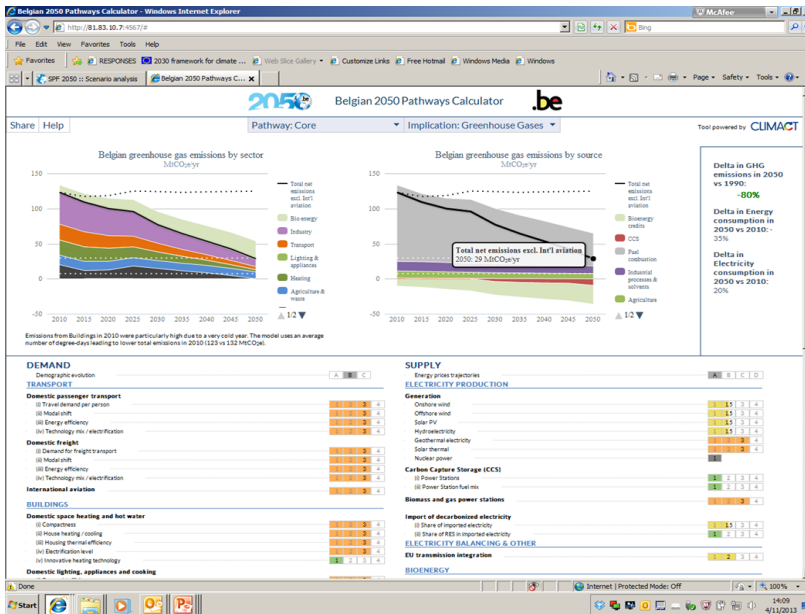
New approaches - Transition management

3

Participative Energy Modeling

Low carbon pathways

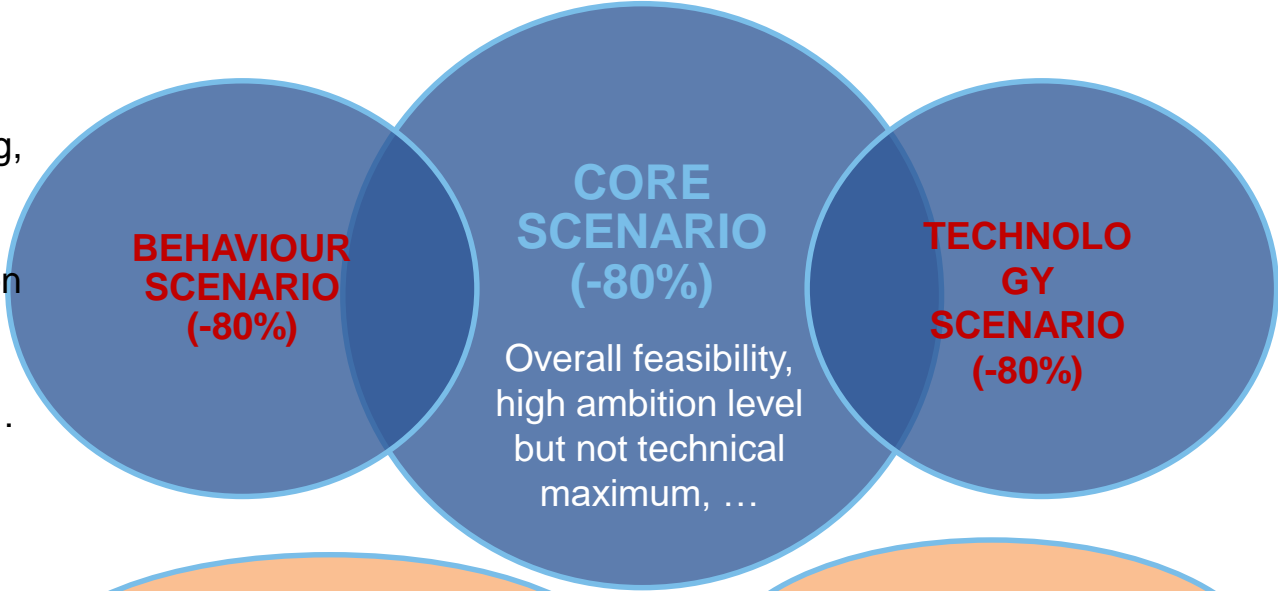
My2050 in Belgium



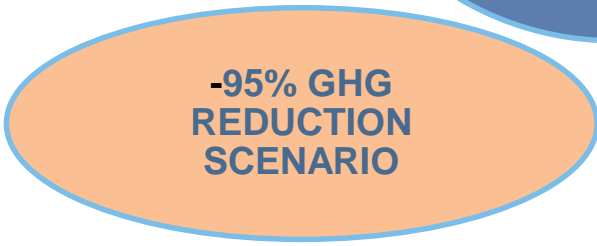
www.climatechange.be/2050

Set of 5 scenarios reaching 80 to 95% GHG emission reduction

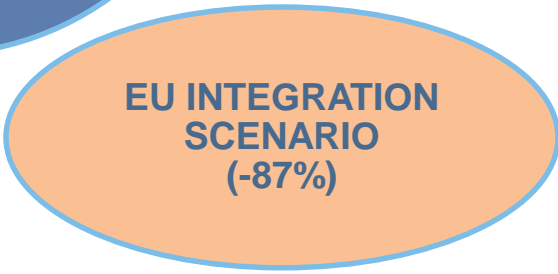
Spatial planning, working arrangements, social innovation and networks, reducing meat consumption, ...



Role of technologies, risks and opportunities, R&D, ...



All levers to reach the higher end of the reduction range

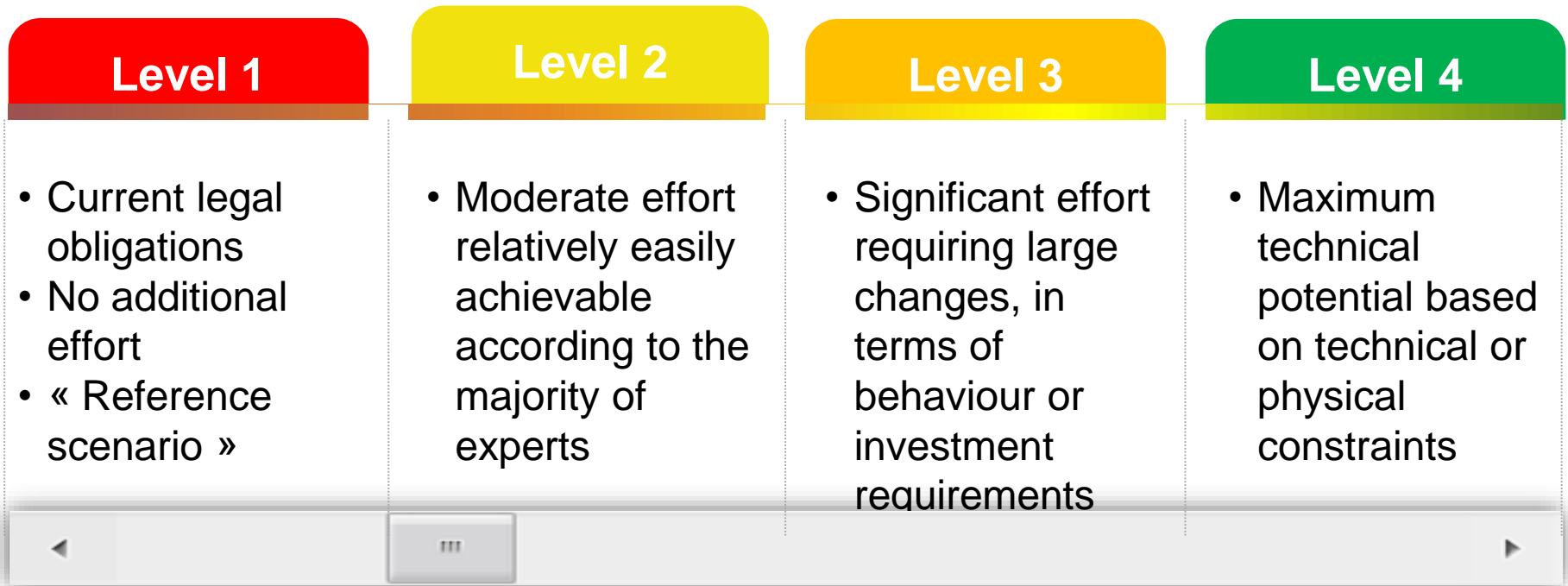


Transmission and back-up requirements, EU energy integration, ...

Source: Belgium OPEERA model (Climact, VITO)



Set of levers with 4 ambition levels



Domestic passenger transport demand

Level 1

- **Transport demand per person increases** by ~20%;
- Occupation levels of cars decrease by ~5%;
- Occupation levels of buses and trains increase by ~10%

Level 4

- **Transport demand per person decreases** by ~20%;
- Occupation levels of cars increase by ~15%;
- Occupation levels of buses and trains increase by ~50% and ~33% resp.



New buildings compactness

Level 1

An important share of the people tend to live & work in **suburban to rural areas**. **Decreasing** proportion of flats compared to 2010 **up to 40%**.

Level 4

An important share of the people tend to live & work in urban areas, resulting in **more urbanisation**. **Increase** in the share of flats in the total of new houses **up to 77%**.



Number of animals

Level 1

With an increasing population and similar diets, **increase in the number of animals by 2% in 2050** compared to 2010 (~43 mio animals).

Level 4

Changes in the diets lead to a **decrease in the number of animals by 43% in 2050** compared to 2010 (~ 24 mio animals).



Based on **national food plan recommendations**



Biomass imports

Level 1

Gradual increase of the import level to **10 TWh/year** in 2020 and then stable from there to 2050 (2/3 solid and 1/3 liquid).

Level 4

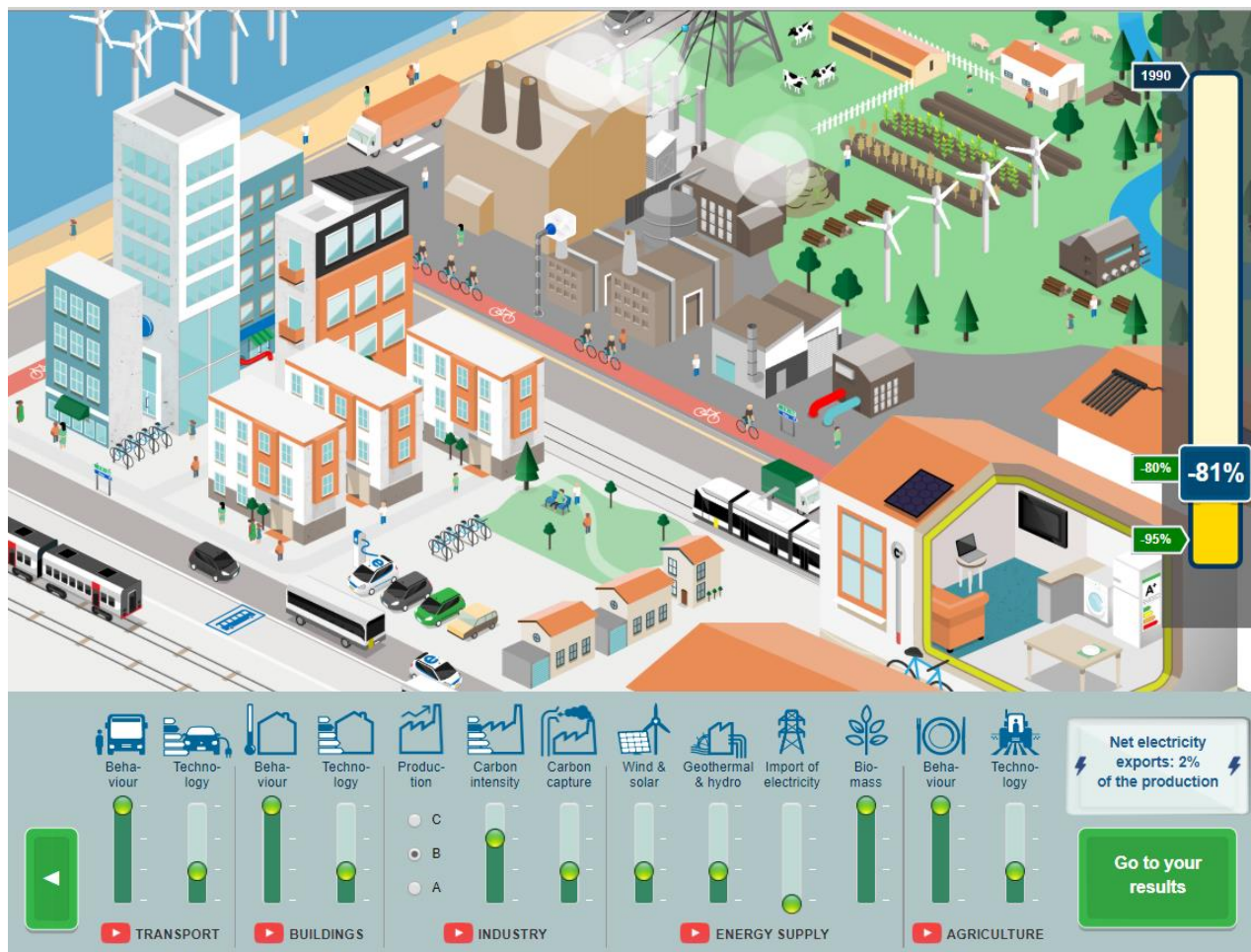
Gradual increase of the import level to 20 TWh/year in 2020 and then further increase to **60 TWh in 2050** (2/3 solid and 1/3 liquid).



Based on estimations of world **potential of sustainable biomass** (per capita allocation)



An example of a behavioral scenario



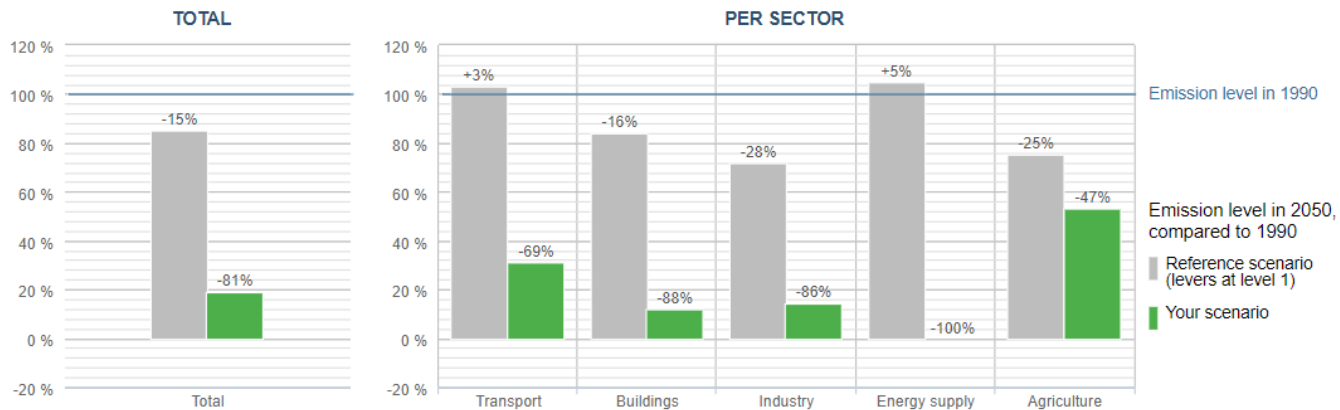
www.my2050.be

Immediate calculation of impacts

My scenario - results in a glimpse

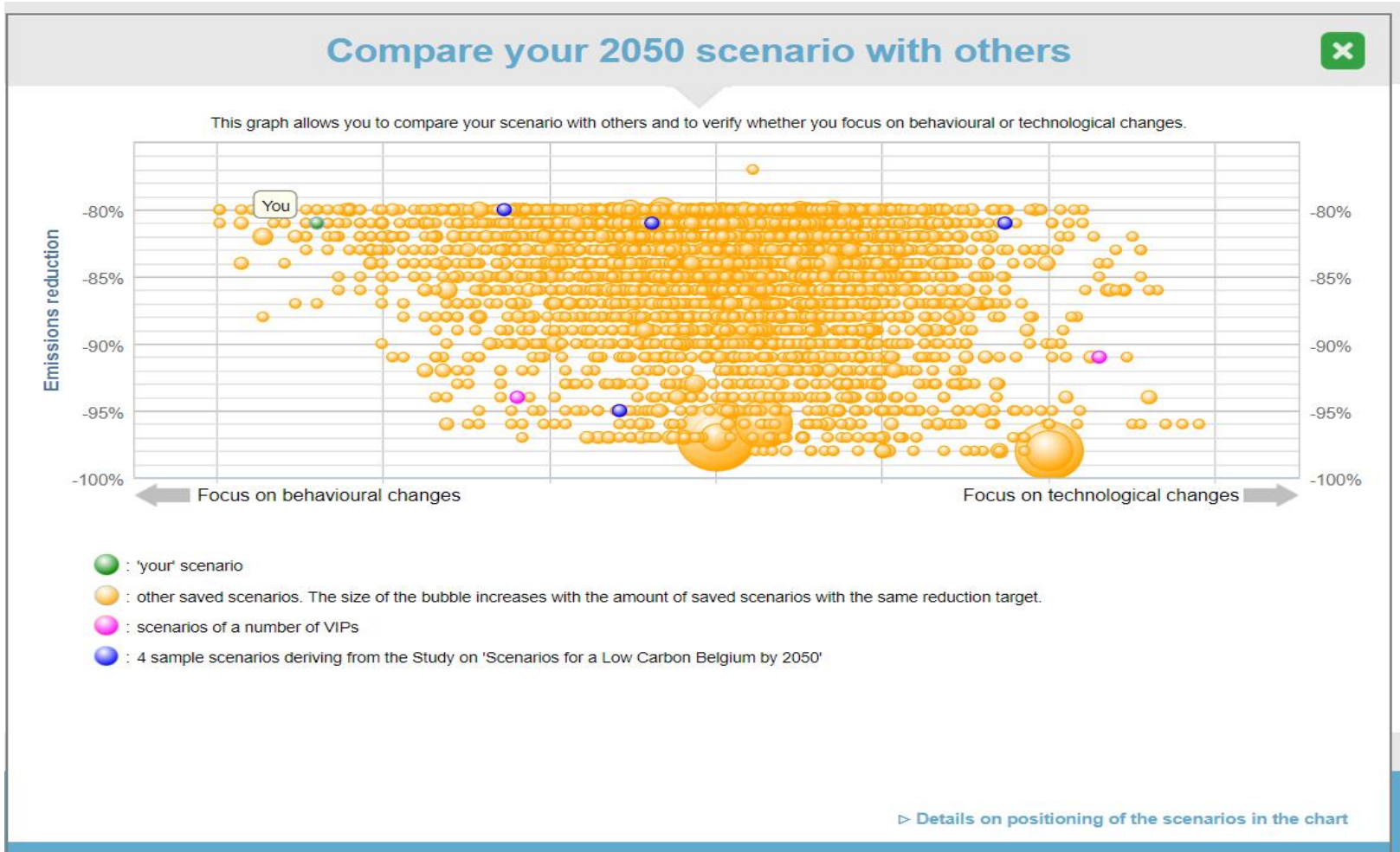
- GHG Emission reductions**
- Energy consumption
- Costs
- Details of my scenario

This graph shows the emissions and the emission reductions in 2050 as a result of your scenario, with respect to the level in 1990. As a comparison, you also see the emissions and the emission reductions in the reference scenario (in which all levers are set at level 1).



- BACK**
- COMPARE YOUR SCENARIO**
- SUBMIT**
- SHARE YOUR SCENARIO**

Comparative analysis of your scenario





- **DISSEMINATION & COMMUNICATION**

VIA 'CLIMATE COACHES' (2017)

- As change makers
- 2 hour workshop in class with the use of My2050 web tool (e-learning tool)
- Target group:
 - secondary schools (students between 16-18 yrs)
 - 'teach the teacher'
- 'Young Professionals' :
 - sound environmental knowledge
 - strong pedagogical & communication skills
- Intensive training:
 - climate science & climate policy at various levels
 - webtool and its use in class



STRENGTHS

- 'My2050' web tool in combination with 'Climate Coaches' :



- Stimulate a societal 'informed' debate
- 'No size fits all': modular
- Key 'take home' messages
- Values and norms
- Empowerment

- New opportunities & challenges :

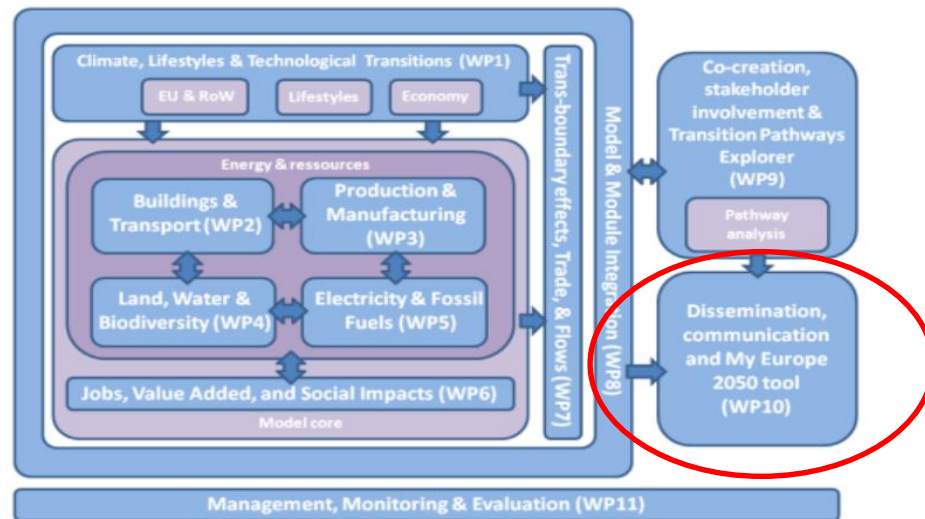
- other target groups (higher education, cities,...)
- content & approach



3 • NEW PERSPECTIVES IN 2020

UPDATE OF BELGIAN TOOLS WITHIN EU

- ❑ New figures & (quantitative & qualitative) analysis to achieve climate neutrality
- ❑ Green Deal & EUCALC



<http://www.european-calculator.eu/>

THANK YOU!

www.climatechange.be/2050

elisabeth.ellegaard@health.fgov.be



TOWARDS A
LOW CARBON SOCIETY