



# SOCIAL SCIENCES AND HUMANITIES IN CLUSTER 3 RESEARCH

Aïda Yassine, Net4Society, NCP Brussels

04 March 2026, Horizon Europe Cluster 3 info day 2026, Brussels

**What is SSH-STEM Integration  
and why it is important for  
impactful researches?**



# SSH-STEM integration

## Definition and Background

inter-, multi-, and transdisciplinary research

involving collaboration between SSH disciplines and non-SSH disciplines

Key principle of Horizon Europe Programme



### Cluster 3 Work programme 26-27

“...Social sciences and humanities (SSH) and social innovation need to be **appropriately integrated** into security research. The aim is to develop an **inclusive set of civilian security solutions** that are as **minimally intrusive** as possible while **respecting freedoms, rights and values**”

# SSH Disciplines—an overview (non-exhaustive)

## SOCIAL AND BEHAVIOURAL SCIENCES:

Economics, economic history, political science, sociology, demography, anthropology (except physical anthropology), ethnology, futurology, psychology, geography (except physical geography), human rights.

## EDUCATION SCIENCE:

Curriculum development in non-vocational and vocational subjects, educational policy and assessment, educational research.

## JOURNALISM AND INFORMATION

Journalism, library and museum sciences, documentation techniques, archival sciences.

## Social sciences

the study of people: as individuals, communities, and societies; their behaviours and interactions with each other and with their built, technological, and natural environments\*

## LAW

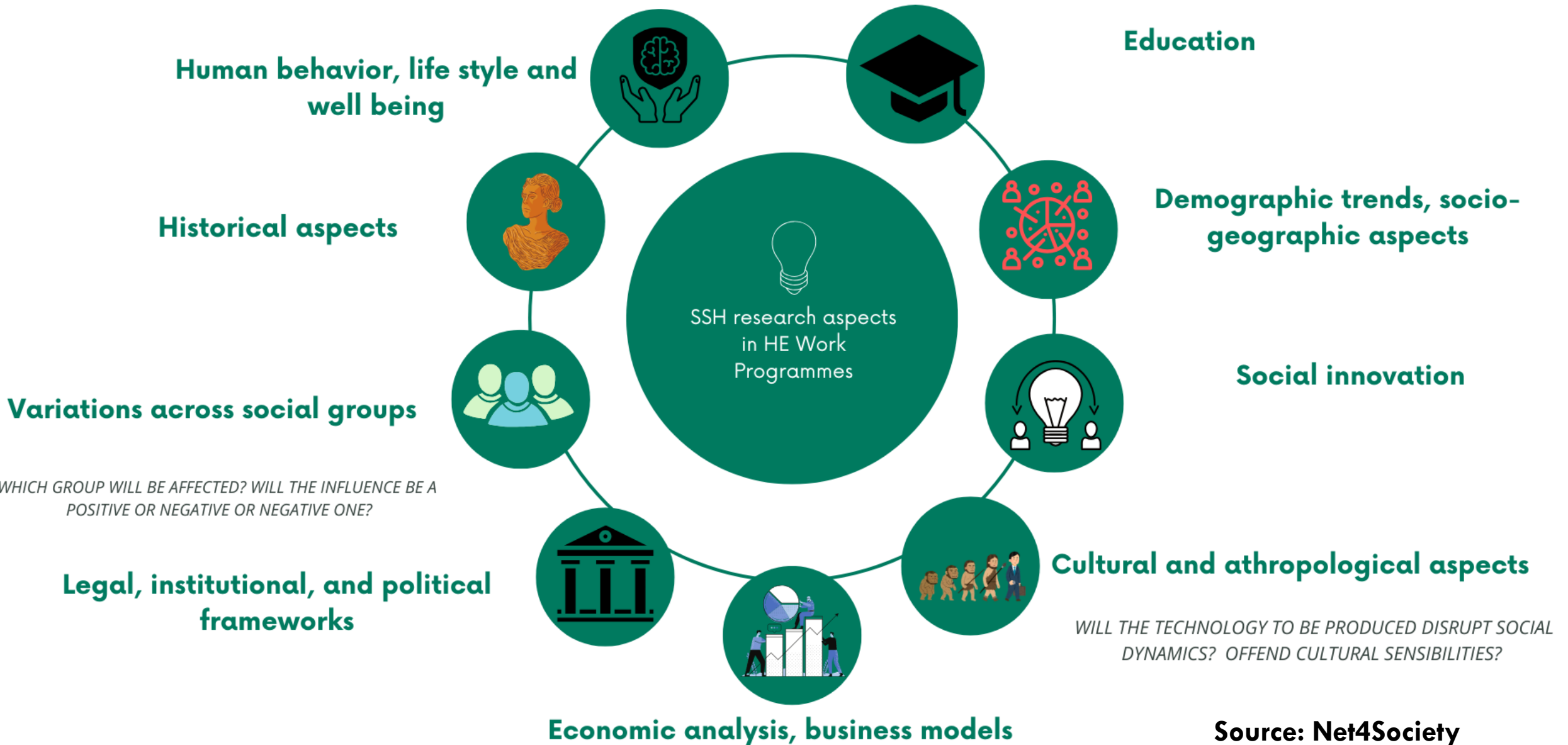
Law, jurisprudence, history of law

## Humanities

are concerned with fundamental, and sometimes unspoken, principles that underpin human cultures\*

Religion and theology, foreign languages and cultures, area studies, native languages, current or vernacular language and its literature, interpretation and translation, linguistics, comparative literature, history, archaeology, philosophy, ethics.

# SSH RESEARCH ASPECTS AND QUESTIONS



# Why Integrate SSH with STEM ?

- To explore **social aspects** alongside **technical/technological aspects** in certain research projects
- To analyse and anticipate the **consequences of technological developments** and innovations **on society of the technology developed**
- To produce **technological tools and innovations that are:**



**Comprehensively analysed**




**Critically Assessed**



**Adequately designed**

# What is not SSH-STEM integration ?

**SSH-STEM integration should not be confused with:**

- x Multi-actor approach
  - x Stakeholder engagement
  - x Communication activities in the project
  - x Citizen science
  - x RRI - Responsible Research and Innovation
- 

**In practice**

**SSH-STEM integration in  
Horizon Europe and Cluster 3**



# Signalling the need for SSH research in Horizon Europe

**“SSH-flags” are the main instrument** used by the European Commission to ensure involvement of specific SSH research methods, competencies, and skills in funded research projects

**SSH-flags are in all clusters and missions (Pillar 2)**

**SSH-flagged topics are identified by the standard sentence**

*“This topic requires the effective contribution of social sciences and humanities (SSH) disciplines and the involvement of SSH experts, institutions as well as the inclusion of relevant SSH expertise, in order to produce meaningful and significant impact”.*

# SSH-Integration in Cluster 3 WP 2026

## Better protect the EU and its citizens against Crime and Terrorism (FCT)

[HORIZON-CL3-2026-01-FCT-01](#) Improving capabilities of law enforcement to counter climate-related challenges

***Sociology, Criminology, Anthropology, Education, Public Administration\****

[HORIZON-CL3-2026-01-FCT-04](#) Crime prevention approaches, online and off-line, tackling the nexus between addictions and crime

***Psychology, Criminology, Gender studies, Communication studies Media Studies\****

[HORIZON-CL3-2026-01-FCT-05](#) Enhancing the security of citizens against terrorism and lone-actor violence in confined spaces such as schools

***Psychology, Sociology, Criminology, Law, Anthropology, Cultural Studies\****

# Consortia and SSH partners

Research consortia made up of groups of researchers stemming from the SSH and STEM

SSH partners perform actual research related to their discipline

They can be responsible for:

Leading work packages, or tasks or at least one deliverable (lead beneficiary) that is considered as an SSH nature\*

Steering the SSH-STEM collaboration

\* Reference: [Integration of social sciences and humanities in Horizon Europe - First monitoring report on SSH-flagged projects funded under Pillar II of Horizon Europe : 2021-2023](#)

# SSH Integration in proposals—practical tips

## SSH Contribution in Proposal

- Often overlooked!
- Closely read & understand what the topic is asking for
- Can have definite advantages for evaluation of proposal

## Finding SSH partners

- Use existing network; look within own organization
- Take part in brokerage events (e.g. from Net4Society)
- Partner search tools (Net4Society & Funding & Tenders Opportunities Portal)

## Involvement of SSH aspects and partners

- in **all** proposal parts (Parts A & B); Part B: Excellence, Impact, Implementation
- **SSH partners must be** part of project consortium
- Plan **sufficient & reasonable budget for SSH** partners, tasks, & planned activities

# SSH-STEM Integration key recommendations



**Conceptual  
Common  
language**

**Priorities  
alignment**

**Interdependency**

# SSH Integration— Examples of Best Practices in Cluster 3



**DIRECTED - Disaster Resilience for Extreme Climate Events** to enhance risk governance, knowledge co-production and interoperability across data, models and tools.



**Co-Creative Improved Understanding and Awareness of Multi-Hazard Risks for Disaster Resilient Society**

developing a multi-hazard risk intelligence network platform supported by the robust Earth System Dynamic Intelligence and a suite of technologies to empower citizens and society with climate actions.



**GEMS: Gaming Ecosystem as a Multilayered Security Threat** on extremism within the gaming community.

# SSH Integration—summarized

**Technical solutions are not enough**

**The SSH are not add-ons**

**Integration of SSH disciplines leads to stronger societal impact,  
broader/better citizen engagement**

# SSH Integration—Useful links

“

**“Opportunities for Researchers from the Socio-economic Sciences and Humanities (SSH) in Horizon Europe”**

Net4Society, January 2026, [link](#)

**Horizon Europe Cluster 2 Community Platform, [link](#)**

Matchmaking platform to identify SSH Partners

**Success stories in SSH – STEM collaboration**

Net4Society, [link](#)



**Thank you  
for your attention!**

**Net4***Society*