

TRIBECA

BELFAST



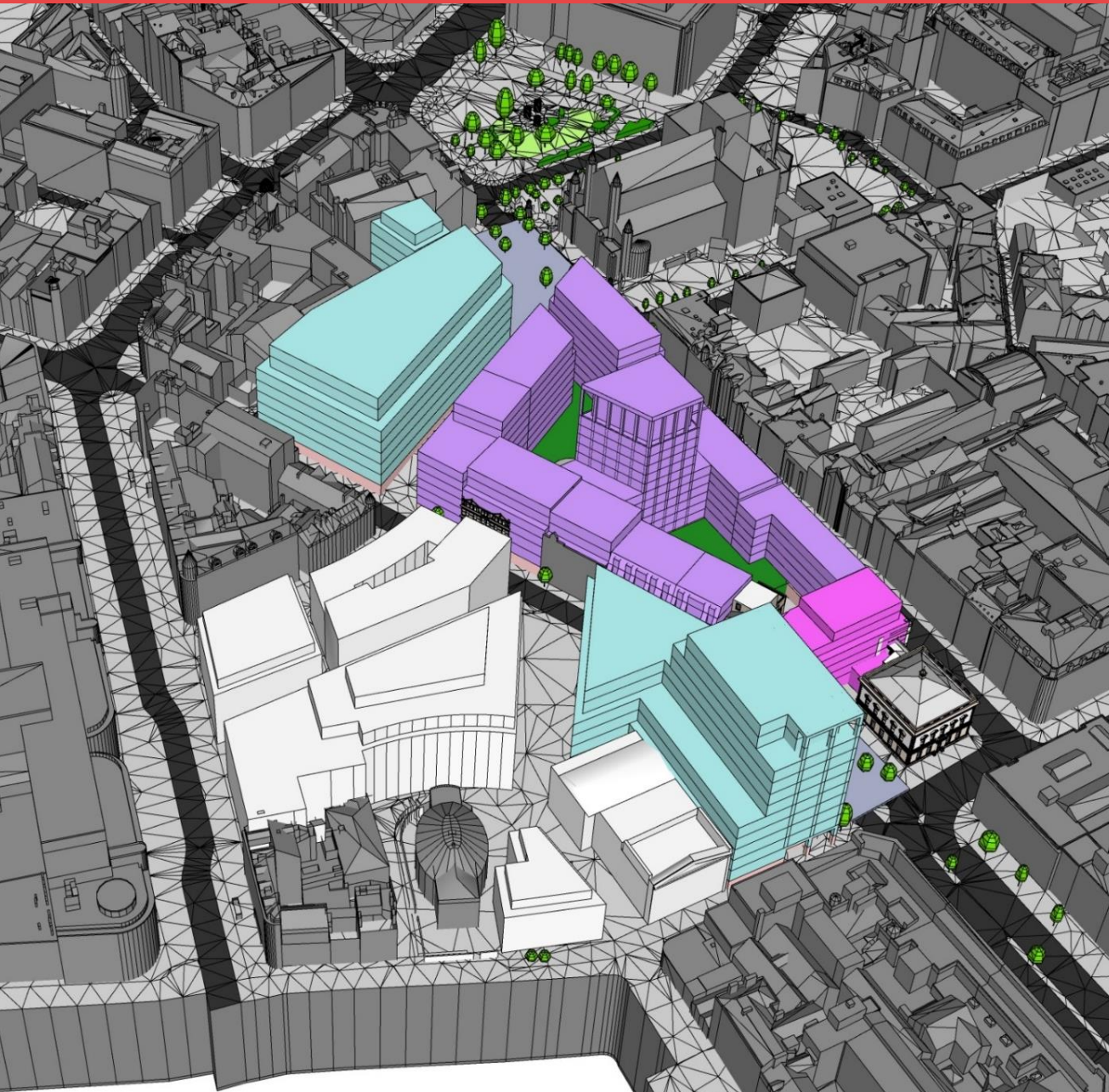
An aerial photograph of Belfast, Northern Ireland, showing a dense urban landscape. A specific area in the upper-left quadrant is highlighted with a semi-transparent red overlay. The text 'TRIBECA BELFAST' is printed in white on this red area. The surrounding city features a mix of traditional brick buildings, modern glass-fronted structures, and a network of roads and bridges. A river is visible on the right side of the image, and a large green field is on the far right.

TRIBECA
BELFAST

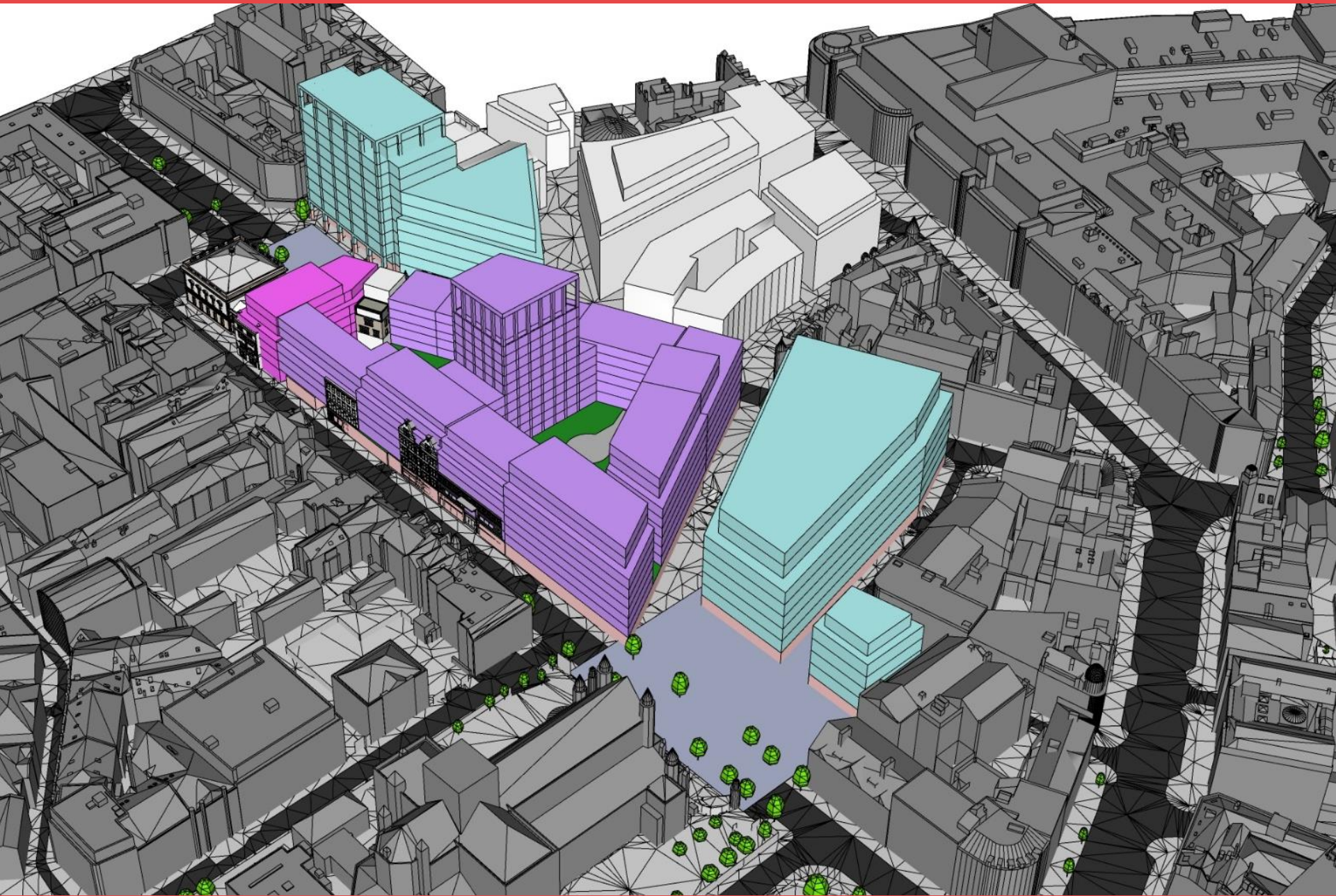
Masterplan

TRIBECA

BELFAST



- 1,500,000 sq ft urban regeneration scheme
- 12-acre site at the heart of the city centre
- Enhancement of public realm and restoration of historic buildings
- £500m Gross Development Value
- Phase 1 under construction
- Increase of £360m pa to GVA
- Creation of 6,000 jobs



Tribeca Belfast - Overview

TRIBECA
BELFAST

Tribeca Belfast represents the single largest mixed use heritage led urban regeneration scheme of the city centre in the history of Belfast

- Grade A offices45,066sqm (GIA)
- Residential.....32,412sqm (GIA)
- Retail / Restaurants.....8,181sqm (GIA)
- Gross development value £500m of which £50m has already been invested in site assembly and planning
- £500m Scheme of which £50m has already been invested in site assembly and planning
- Tribeca Belfast offers Investors flexibility. The majority of the scheme is consented in outline which allows Castlebrooke the opportunity to adapt to a post Covid-19 world.

Contact:

- Neil Young, Chief Executive, Castlebrooke Investments
 - Jonathan Mitchell, Director, Castlebrooke Investments, JMitchell@castlebrookeinv.co.uk
 - Estelle Hunt, Director, Castlebrooke Investments, EHunt@castlebrookeinv.co.uk
 - 49 Berkeley Square, London, W1J 5AZ
- T 044 (0)203 301 1450

