



HELPING YOU BUILD YOUR CAREER IN CONSTRUCTION

By providing you with support along the way



1





WHO WE ARE


The Chartered Institute of Building is at the heart of a management and leadership career in the built environment.

<https://www.ciob.org>

2




OUR VALUES



Professionalism – We champion standards and professional ethics in the science and practice of building and construction.



Integrity – We strive for equity and fairness in our decision making and treatment of others.




Excellence – We pursue the highest standards of quality in everything we do.




Respect – We consider the impact our actions will have on individuals and the public good.


3




WHAT WE DO




IMPROVE
the quality of life for the users and creators of our built environment




DRIVE
up professional standards



PUSH
forward innovation




INFLUENCE
political decisions




STRENGTHEN
the talent pool across the industry

4




WHY SHOULD YOU JOIN


You are the future and the emerging talent of the industry and of our professional body




5




HOW CAN WE HELP YOU




NETWORK
with industry professionals across the globe




ACCESS INFORMATION
CIOB library, CIOB Academy, CIOB job site



GLOBAL KNOWLEDGE
GCR & CM Magazines



PRACTICAL KNOWLEDGE
webinars, guest lecturers, site visits, CPD events



INTERPERSONAL AND SOFT SKILL DEVELOPMENT
get involved with Novus, CIOB challenges

6

WHAT IS MEMBERSHIP

- Membership improves professionalism in the built environment.
- Members shape government policy, raise standards and advance education
- MCIoB (Member) compares to a British Bachelor's Degree
- We have more than 45,000 members worldwide
- FCIoB (Fellow) compares to a Master's Degree
- Our members work in disciplines that cover the entire lifecycle of a built asset and beyond
- Members can be either a Chartered Construction Manager or Chartered Builder
- Membership is available to anyone who wants a management or leadership career in the built environment.

7

WHAT ARE THE BENEFITS OF YOU BECOMING A MEMBER?

- ONLINE LEARNING & TRAINING
- GLOBAL EVENTS
- AWARDS & COMPETITIONS
- LIBRARY
- BENEVOLENT FUND
- CIOB NOVUS

8

Novus
TOMORROW'S LEADERS

CIOB NOVUS

Novus is a community within the CIOB.....

-providing opportunities for young professionals to develop and grow on a personal & professional level.....
-all the time inspiring the next generation of construction industry professionals.

Novus is here to help YOU...

<https://www.ciob.org/novus>

9

Novus
TOMORROW'S LEADERS

WHY SHOULD YOU GET INVOLVED?

- CAREER PROGRESSION
- VOICE WITHIN CONSTRUCTION
- EVENTS
- GLOBAL NETWORK
- OPPORTUNITIES TO INSPIRE OTHERS
- FUTURE OF CONSTRUCTION

10

HOW TO JOIN

CIOB:

- Register online on our members' portal
- Once registered, submit an application for membership

Novus:

- Get in touch with your local CIOB contact

REGISTER NOW

JOIN NOVUS

11

OUR OFFICES

Map showing CIOB offices worldwide:

- Bracknell (HQ)
- Dublin
- London
- China (North), Beijing
- China (West), Chengdu
- China (East), Shanghai
- Dubai
- Malaysia
- Singapore
- Johannesburg
- Hong Kong
- Sydney

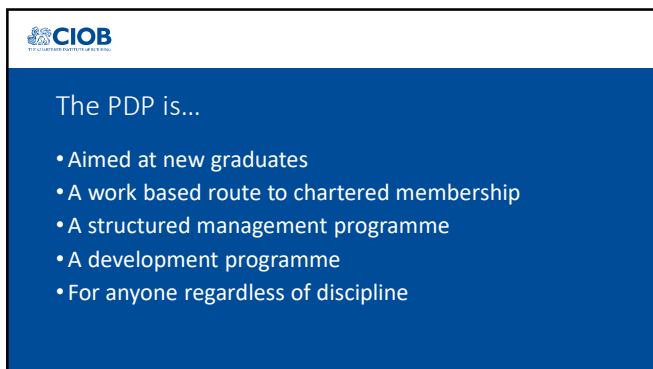
12



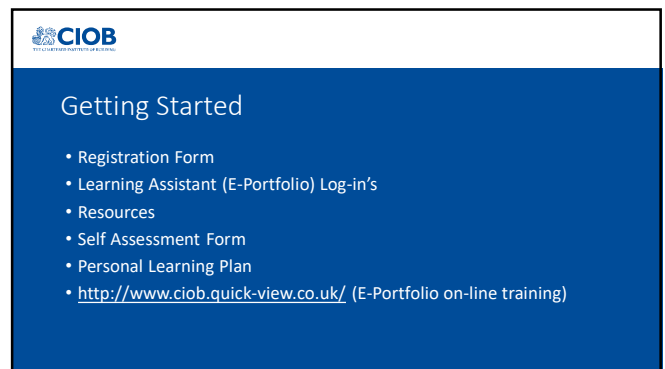
13



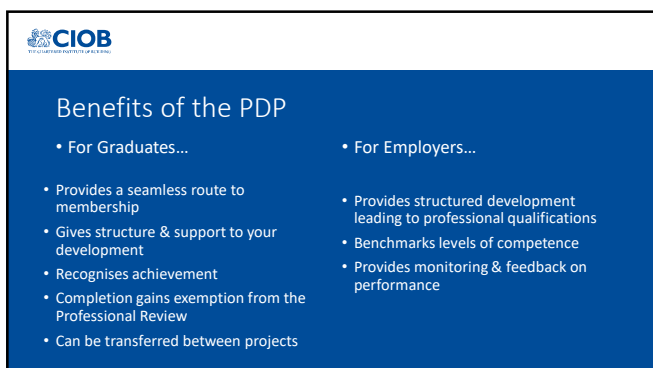
14



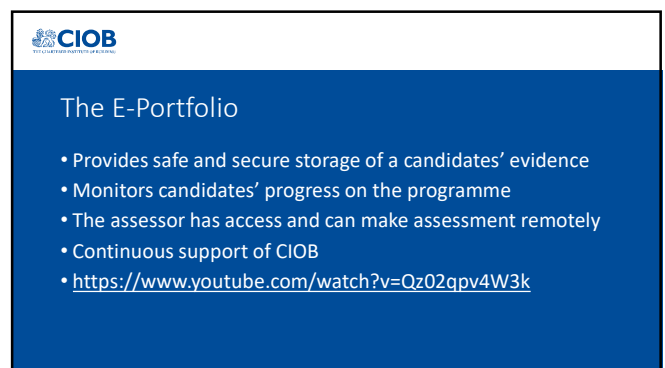
15



16



17



18

Professional Review is.....

- Aimed at experienced professionals
- Paper-based assessment of skills and competence
- Assessed by CIOB Members and Fellows

Covers

- Occupational competence
- Management competence
- Commitment to professionalism

19

Occupational Competence

- Planning and organising work
- Managing health, safety & welfare
- Managing quality
- Implementing sustainable construction development
- Knowledge of commercial, contractual & legal issues

20

Let's go through it

Management Competence

- Communication
- Decision making
- Managing information
- Leadership and strategic management/financial management
- Developing people or teams
- Innovation

21

Let's go through it

Commitment to Professionalism

- Professional Judgement & Responsibility
- Commitment to the Code of Ethics
- Commitment to Continuing Professional Development (CPD)

22

Getting Started

- You must be in membership
- [CIOB Portal > Site Access > Login](#)
- Attend a PR workshop - [CIOB Events Calendar](#)
- You will need:
 - Personal Information Form
 - The Application Form
 - Guidance Notes


Downloadable from <https://www.ciob.org/professional-review>

23




How to complete the Professional Review

- Complete the Application Form , referring to the Guidance notes
- You will need to provide specific examples of your work activities that meet the criteria in the Guidance notes.
- Table of Competencies in the guidance notes show the criteria to cover


24

 **CIOB**
REGULATING CREDIT RISK



Outcomes

-  Deferral - Advice will be given for correction of report and resubmission. Additional workshops available.
-  Interview
-  Pass

25

 **CIOB**
REGULATING CREDIT RISK

GET IN TOUCH

-  **FIND A CIOB HUB NEAR YOU**
www.ciob.org/near-you
-  **CALL US ON**
+44 (0) 1344 630 700
-  **CONNECT IN SOCIAL MEDIA**
Twitter | Facebook | LinkedIn

26