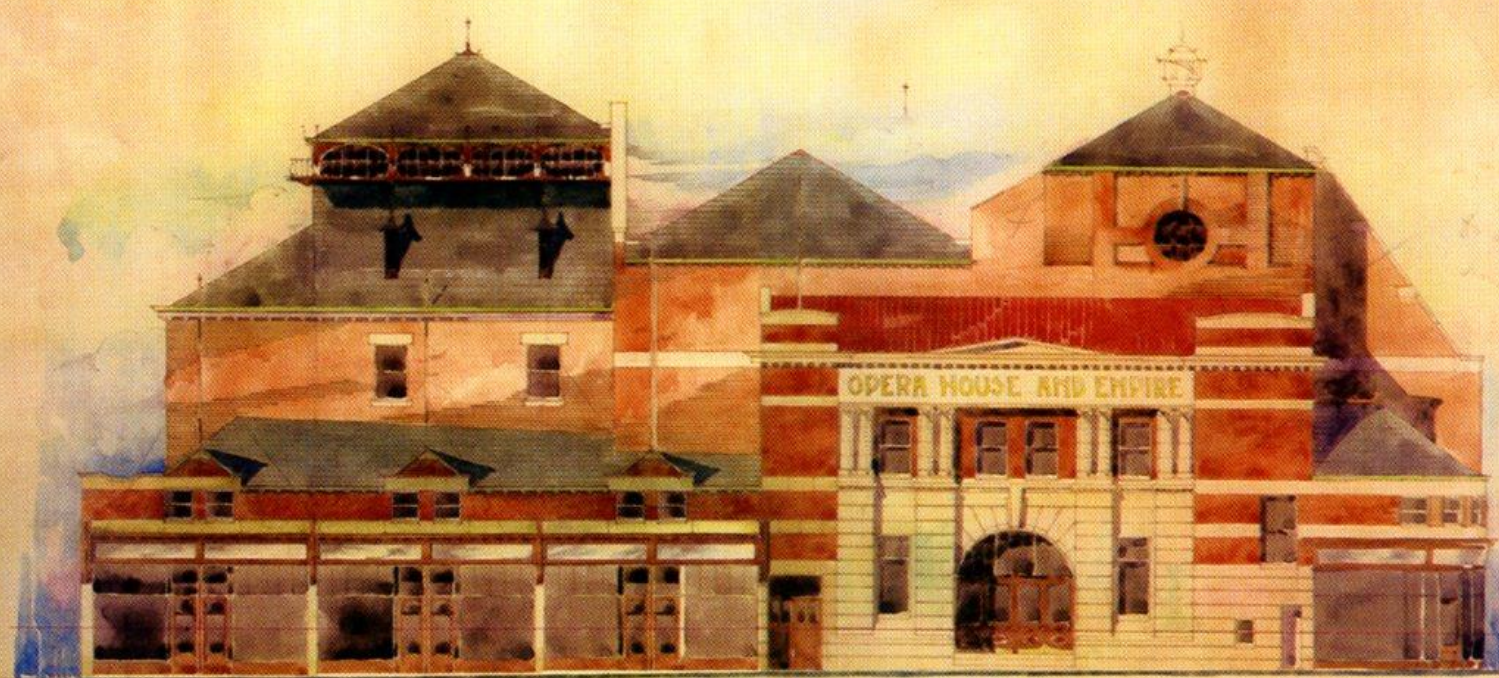
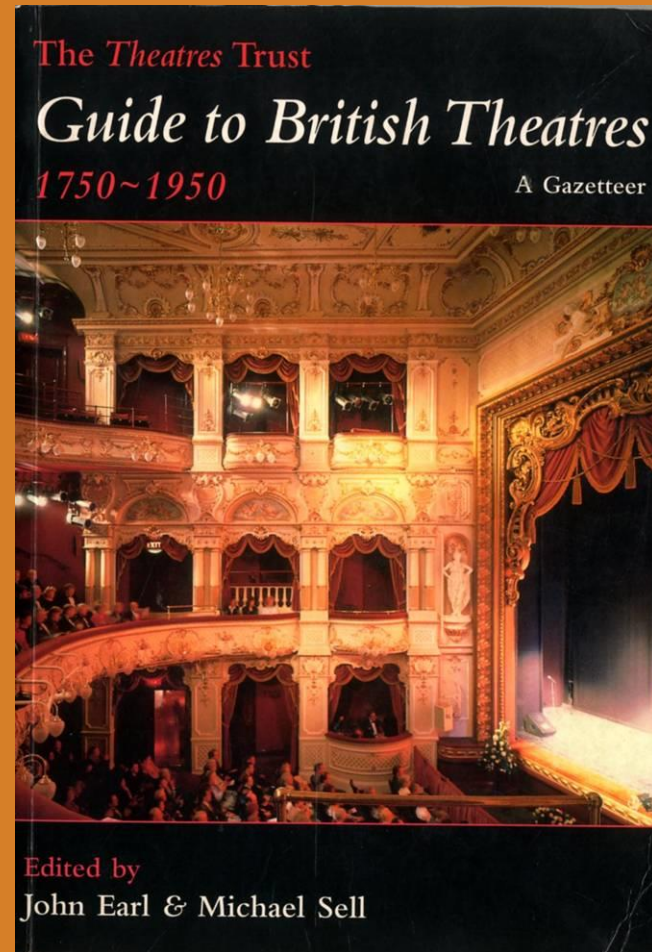


PROPOSED OPERA HOUSE AND EMPIRE THEATRE
FOR MEDON THE DARLINGTON THEATRE CO. LTD.
SCALE 1/8" = 1 FOOT



ELEVATION TO PARKGATE





MR. W. H. WARD, ARCHITECT.

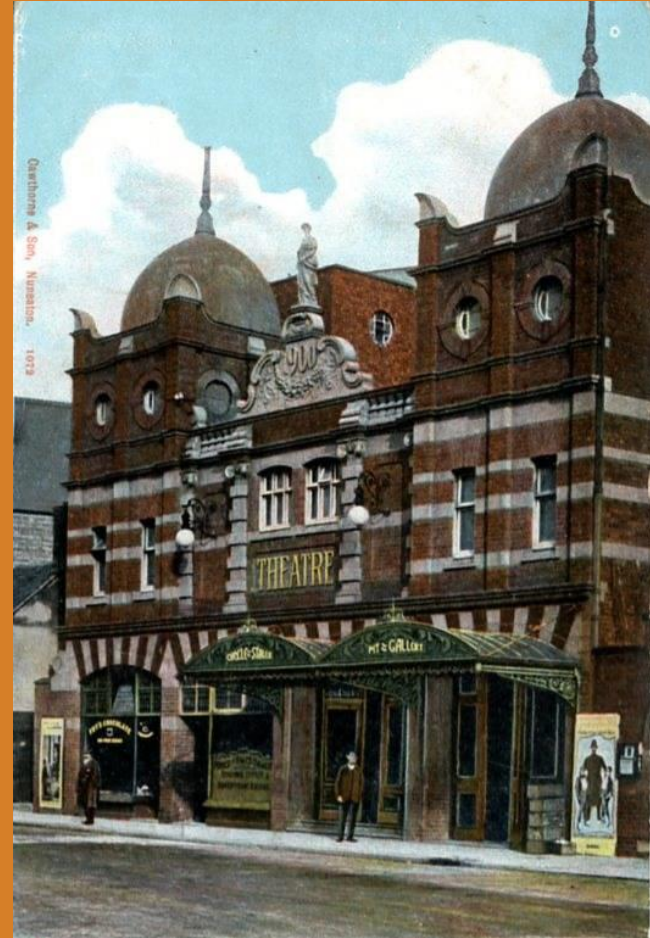




Mr. SAM. OWEN



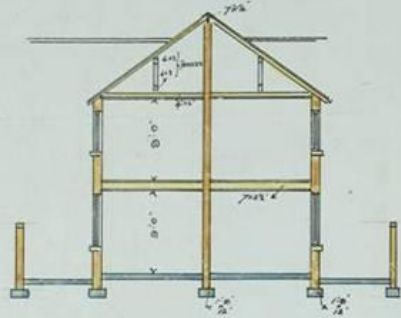
MR, G. F. WARD as *Iago*.
From a Photo by Karoly.





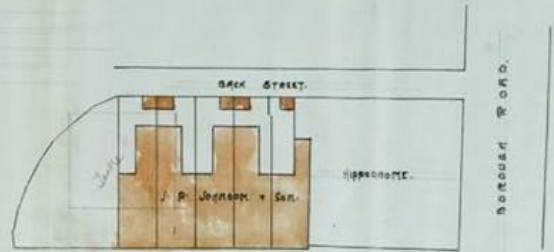
NEW HIPPODROME

AMENDED PLAN OF NEW BUSINESS PREMISES
 PARKGATE DARLINGTON FOR
 MESSRS J. P. JOHNSON AND SON
 SCALE: EIGHT FEET TO ONE INCH.

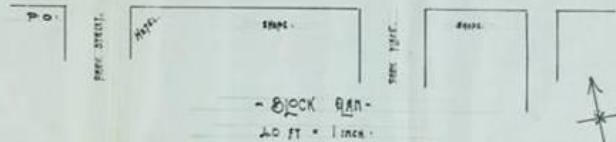


SECTION C-D

WINDERS BY MR ARCHITECTS.
 SPINDLES
 DARLINGTON HEIGHT 100.



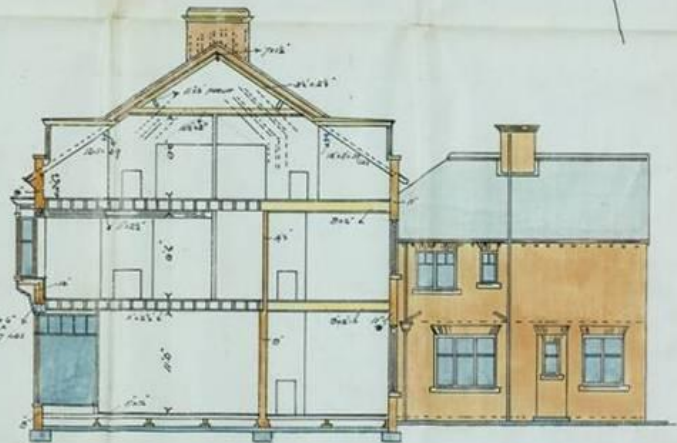
P A R K G A T E



- BLOCK PLAN -
 20 FT = 1 INCH.



ELEVATION TO PARKGATE.

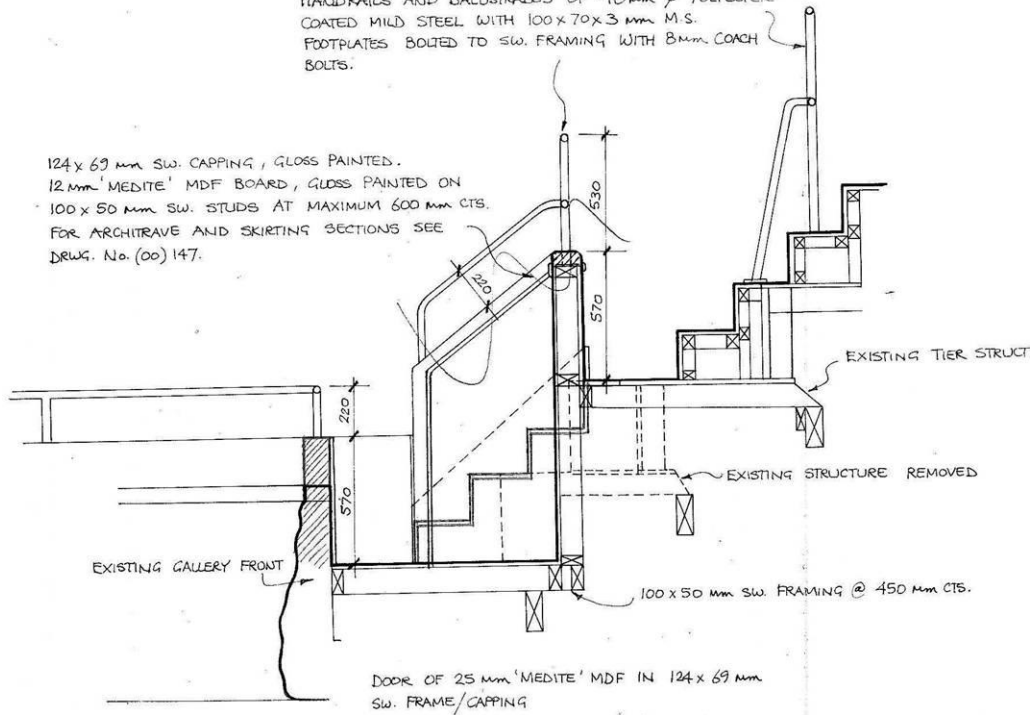


SECTION A-B

SECTION BB SCALE 1:20

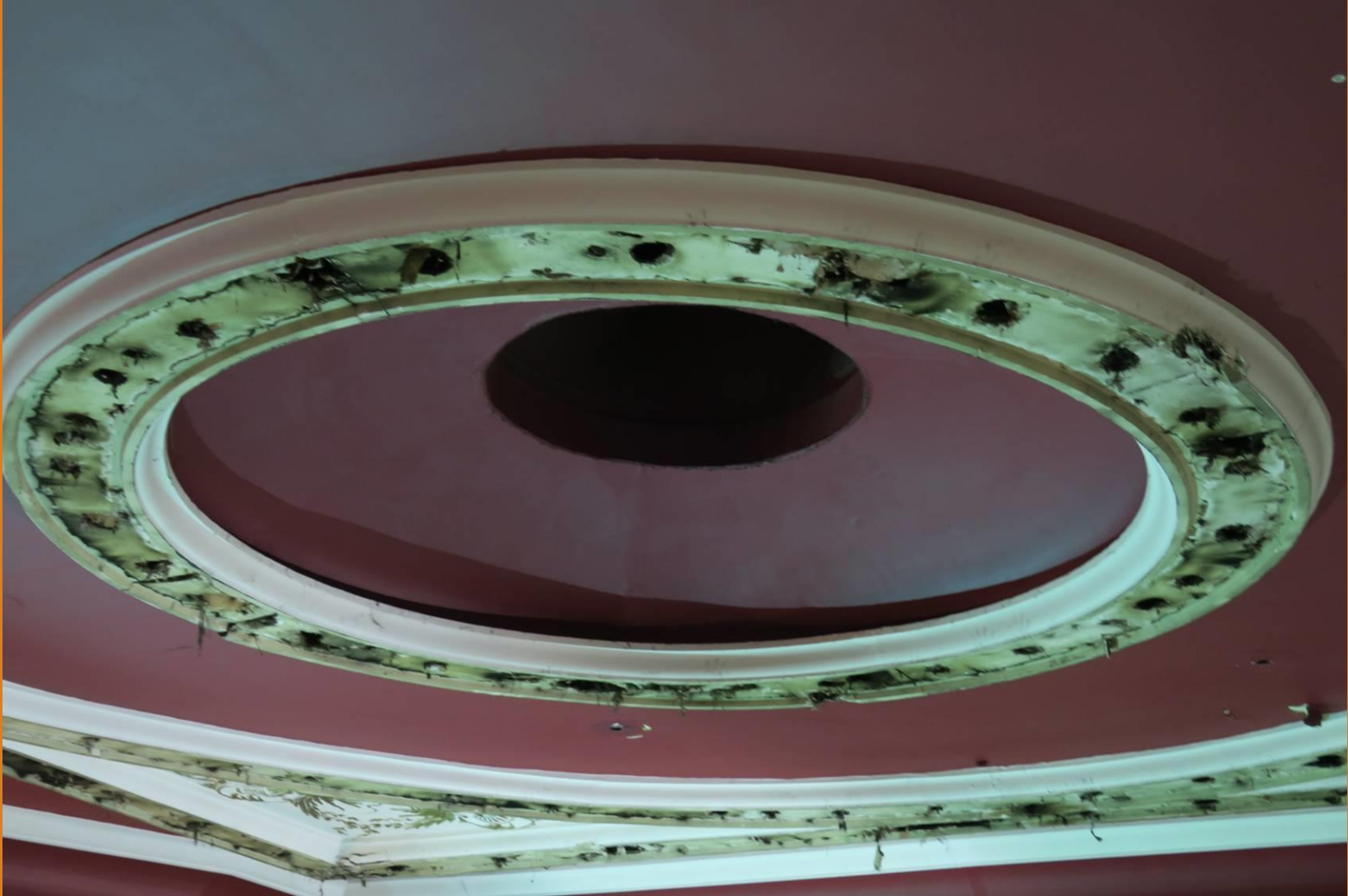
HANDRAILS AND BALUSTRADES OF 40mm ϕ POLYESTER
COATED MILD STEEL WITH 100x70x3 mm M.S.
FOOTPLATES BOLTED TO SW. FRAMING WITH 8mm COACH
BOLTS.

124x69 mm SW. CAPPING, GLOSS PAINTED.
12mm 'MEDITE' MDF BOARD, GLOSS PAINTED ON
100x50 mm SW. STUDS AT MAXIMUM 600 mm CTS.
FOR ARCHITRAVE AND SKIRTING SECTIONS SEE
DRWG. No. (00) 147.









The "Stott-Thorp" Patent Reflex Light.

PATENT THEATRE SUNBURNER.

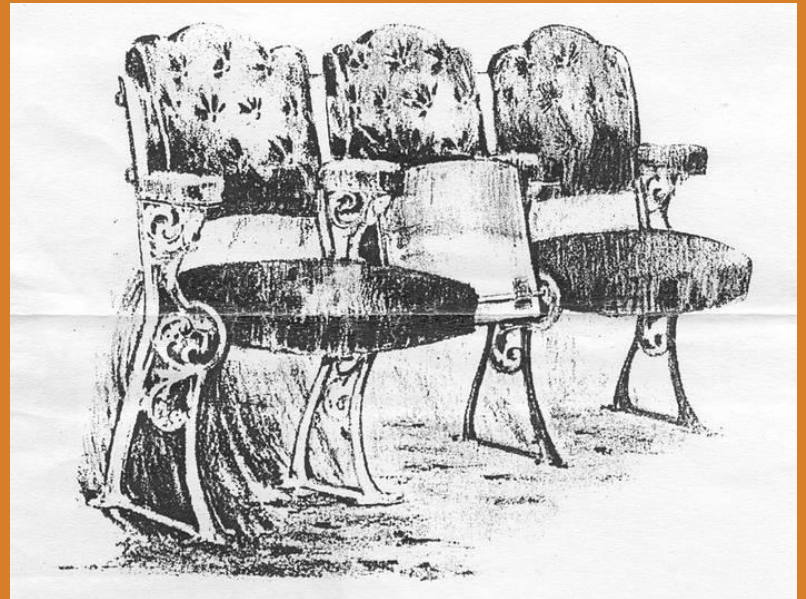
No. 40

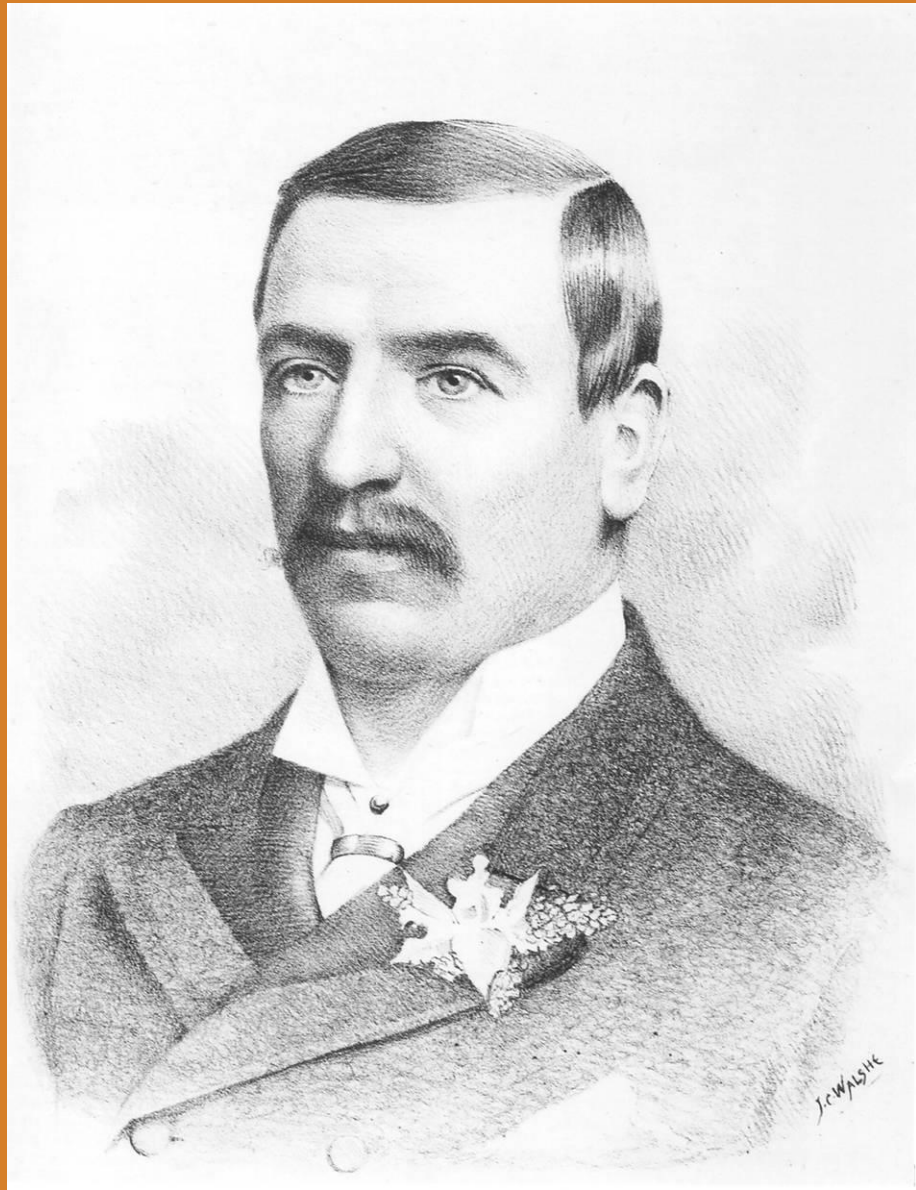


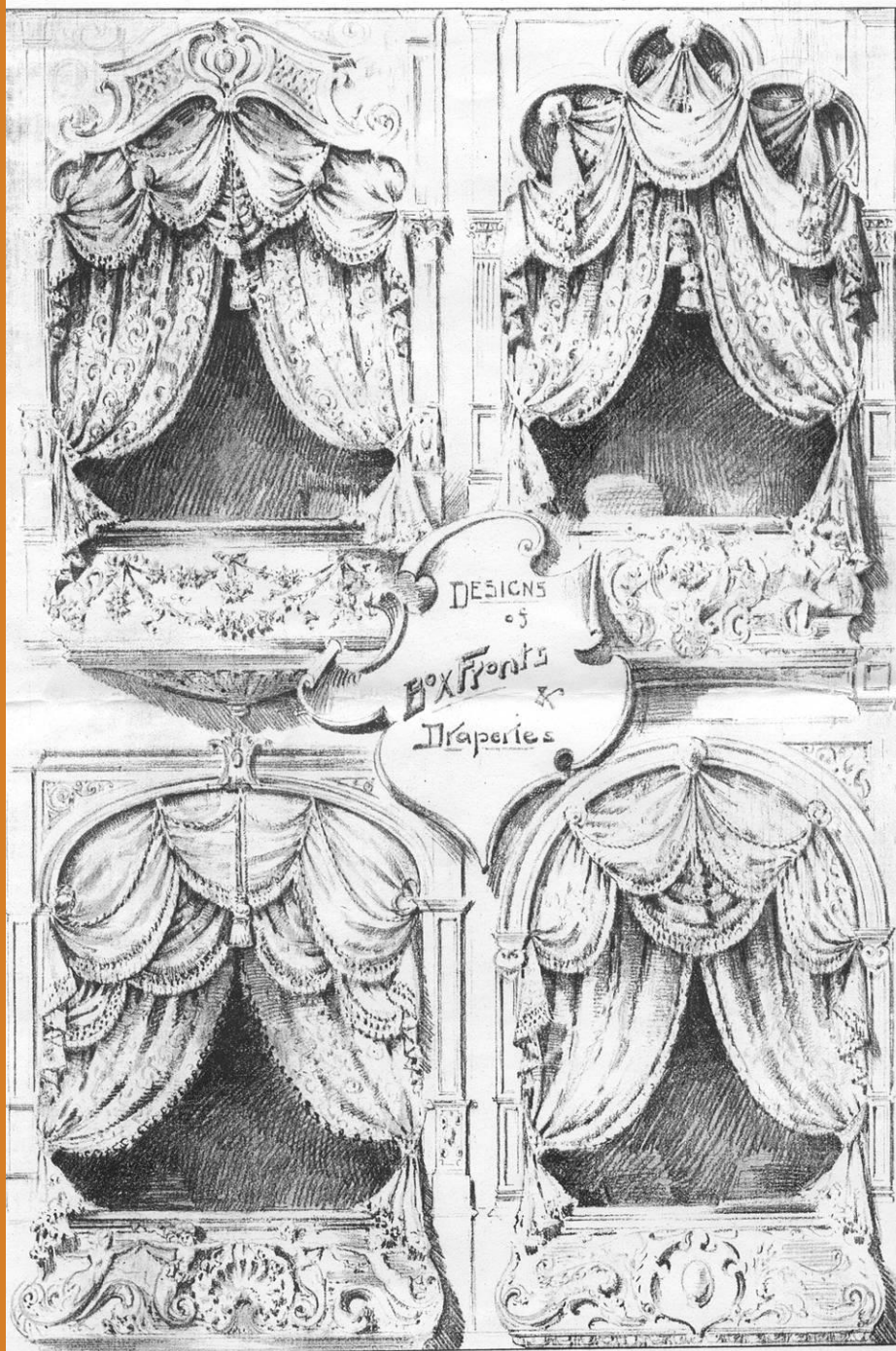
The only Sunburner which forms a direct acting Ventilating Medium for Auditoriums.
No other operates the same principles of combination.
For use in conjunction with this Sunburner, we make a special design of Ornamental Extractor,
which is very effective as a Roof Terminal for Theatres.



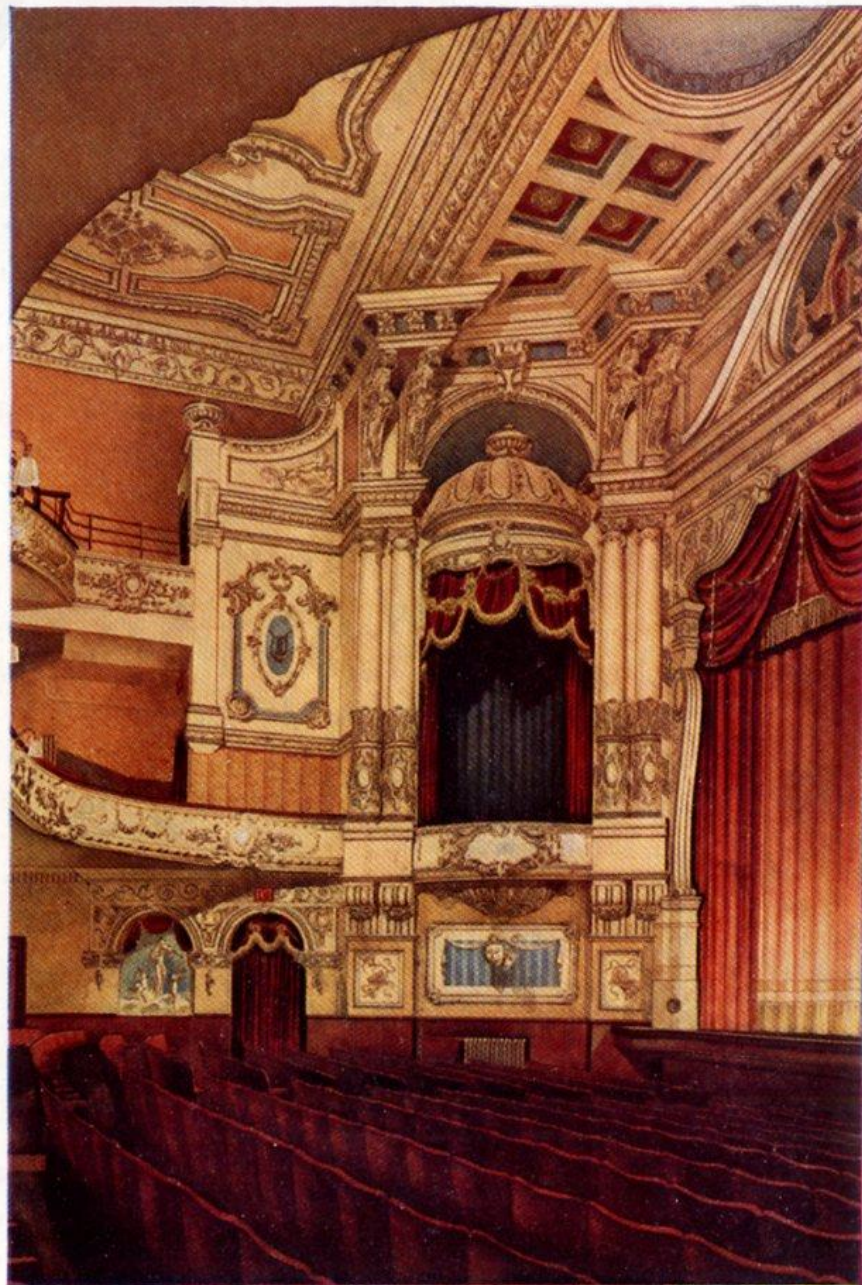








DESIGNS
of
Box Fronts &
Draperies



THE WALPAMUR CO. LTD.
DARWEN & LONDON

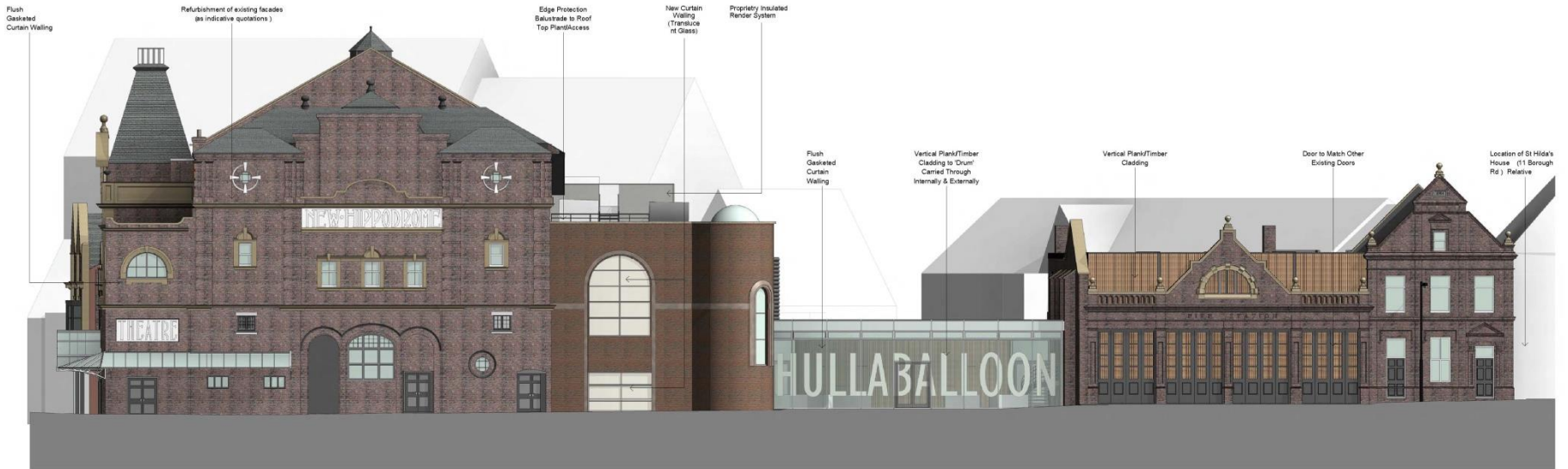
The Hippodrome, Middlesbrough, (reproduced by
permission of Circuits Management Association Ltd.).







1 South Proposed - View from Parkgate 1to100
1 : 100



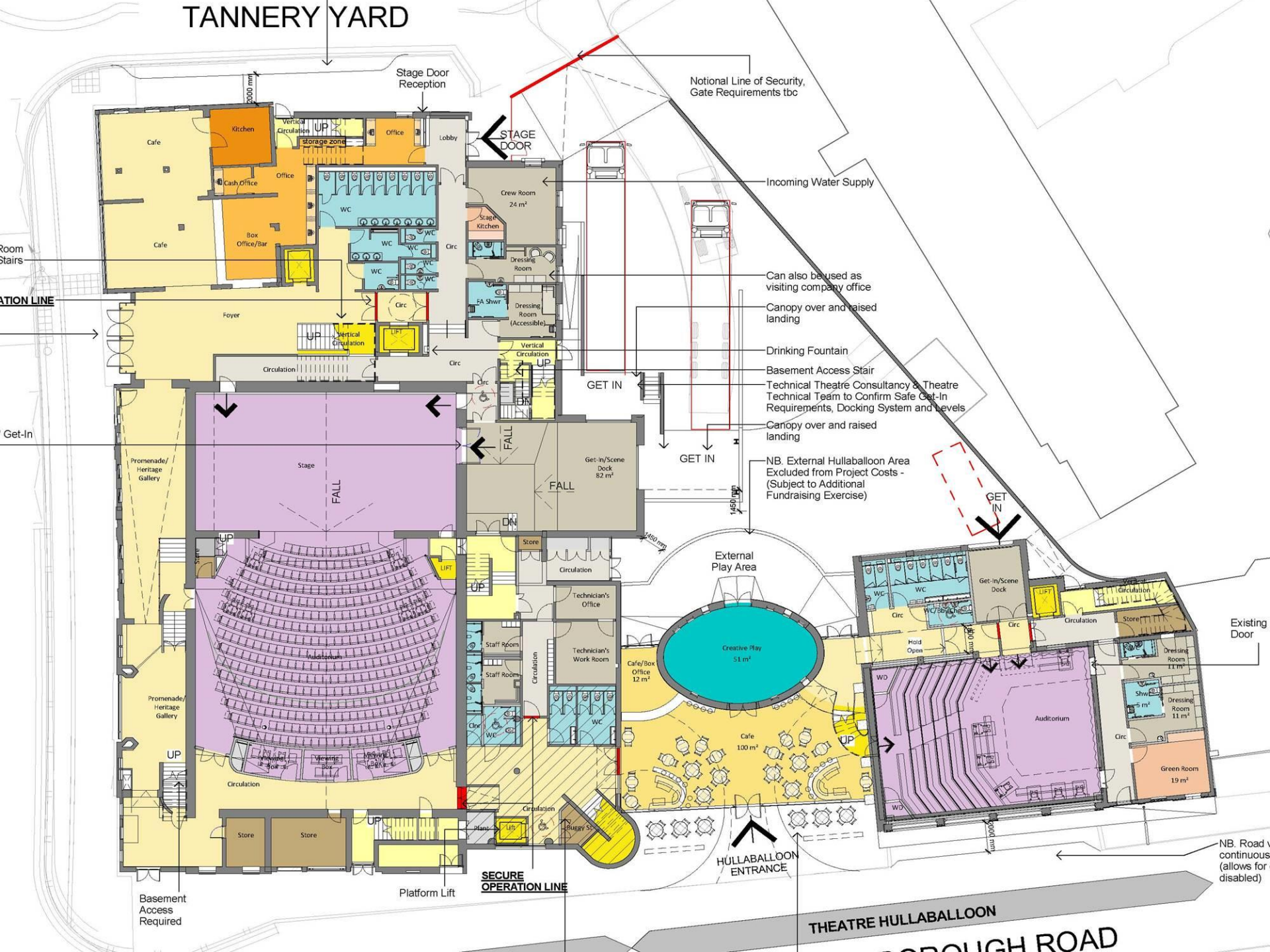
2 East Proposed - View from Borough Road 1 to 100

1:100

Issue	Preliminary
Project	Derlington Civic Theatre & The Hullaballoon
Client	Partridge and Borough Rd
Project No.	0954
Drawn	CG
Checked	DC
Scale	1:100
Rev	6

_space

TANNERY YARD



Notional Line of Security, Gate Requirements tbc

Incoming Water Supply

Can also be used as visiting company office

Canopy over and raised landing

Drinking Fountain

Basement Access Stair
Technical Theatre Consultancy & Theatre Technical Team to Confirm Safe Get-In Requirements, Docking System and Levels

Canopy over and raised landing

NB. External Hullaballoon Area Excluded from Project Costs - (Subject to Additional Fundraising Exercise)

Existing Door

NB. Road continuous (allows for disabled)

THEATRE HULLBALLOON

ROUGH ROAD





Construction Phase



SAFETY CURTAIN

Welcome to
Darlington Civic Theatre

Welcome to
Darlington Civic Theatre

















EXIT
FIRE EXIT







Finished Product





PALACE

THEATRE

7.5t
Except for access



Full Bar - 12:00pm - 11:00pm
Happy Hour - 4:00pm - 7:00pm
Bar - 11:00pm - 1:00am
Your Nearest Bar - Bar
Happy Hour - At End Of
Public Gallery
1000 Lounge - On 11 Floor
Landing

The Hippo Lounge

Behold a world of water

A thousand litres, held above the crowds

In a tower that gives this theatre its crown

*Dancing, diving, splashing, crashing,
all in time with the band*

*An unexpected rinking for the posh
frocks on the front row*

But definitely no hippos







DE
ORE

THEATRE
LATIONS
DRY ACTIVITY
VE PLAY SPACES
CAFÉ

5 405 405
.org.uk



The Hullabaloo

MAGICAL THINGS
For YOU to
SEE and DO

One Item Only...
Action's
Shanes

Gluten
Egg and Spoon

With thanks to
Hullabaloo



Gillian Dickinson
Creative Play





Programme

Change Management

Evolving critical path

Constantly looked for betterment

Almost impossible to programme

There wasn't a template to use as a guide

Problems – the sun didn't always shine

Re-design

Limited Surveys

Temporary works

Managing the unexpected

Underperforming specialist supply chain

Quality

Shared learning

‘Why?’ Workshops

Up-skilled current supply chain

I led the quality inspections and set the bar high

Appointed specialists based upon their experience (where possible)

